

# News

## CADKON+ 2022 Service Pack 1

---



[www.cadkon.eu](http://www.cadkon.eu)

[www.cadnet.cz](http://www.cadnet.cz) , [helpdesk.cadkon.eu](mailto:helpdesk.cadkon.eu) , [www.graitec.com](http://www.graitec.com)

## CADKON+ 2022 Service Pack 1 News

---

CADKON+ 2022 Service Pack 1 contains improvements and fixes for CADKON+ ARCHITECTURE, CADKON+ RC and CADKON+ BASIC version 2022.

It is intended for all commercial **CADKON+ 2022** installations (build **22.0.0043**). These are installations downloaded before the 11th of October 2021, which is the date of the Service Pack 1. Installations downloaded after this date already contain the Service Pack 1 and it therefore does not need to be installed separately.

The exact build of the installed CADKON+ can be verified by command „\_CKABOUT“, directly in the CADKON+.

### *Contents:*

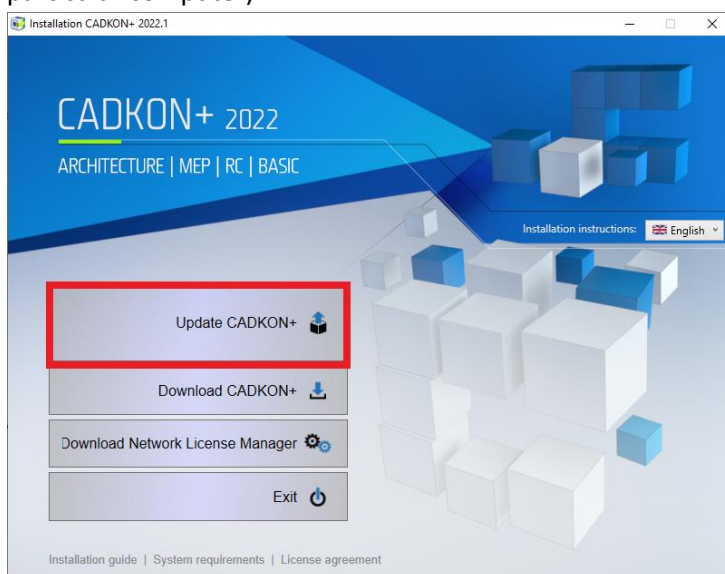
|  |    |
|--|----|
| General information about service pack installation .....                          | 3  |
| Installation on a computer with already installed CADKON+ 2022 .....               | 4  |
| Installation on a computer without CADKON+ 2022 .....                              | 5  |
| News for CADKON+ ARCHITECTURE, CADKON+ RC a CADKON+ BASIC .....                    | 7  |
| News for CADKON+ ARCHITECTURE.....   | 8  |
| News for CADKON+ RC .....  | 12 |
| Solved problems common for CADKON+ ARCHITECTURE, CADKON+ RC and CADKON+ BASIC..... | 17 |
| Solved problems for CADKON+ ARCHITECTURE.....                                      | 21 |
| Solved problems for CADKON+ RC .....   | 22 |
| Technical support .....  | 23 |

## General information about service pack installation

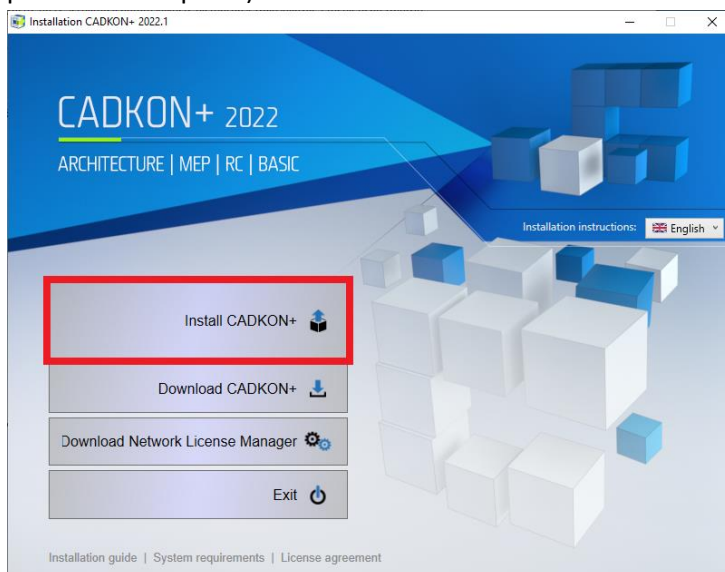
CADKON+ service packs are always part of a CADKON+ online installation. Regardless of the CADKON+ 2022 version you have installed, online update of the program will update all required files to their newest versions.

The service pack installation is carried out using an updated CADKON+ 2022 exe file (*SetupCadkonPlus\_2022.exe*). After running the exe file, installation program will automatically identifies whether CADKON+ 2022 is or is not installed and will offer one of the following options:

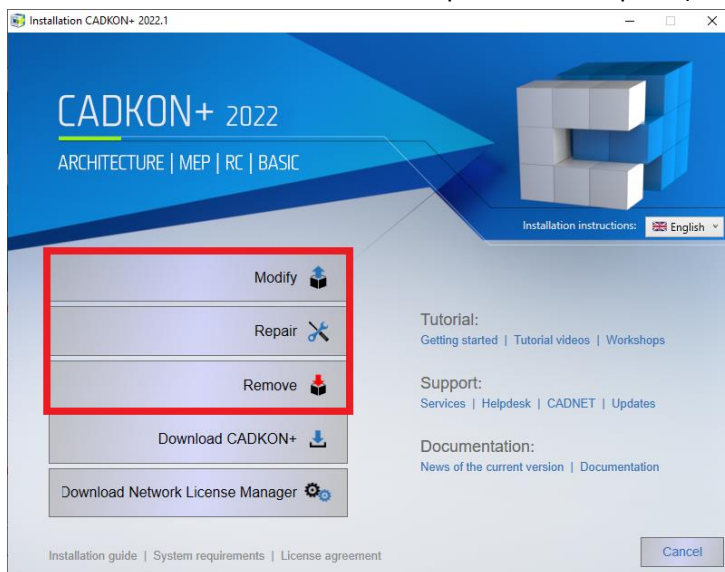
- **Update CADKON+** (in cases when an older version of CADKON+ 2022 is found on the particular computer).



- **Install CADKON+** (in cases when no older version of CADKON+ 2022 is found on the particular computer).



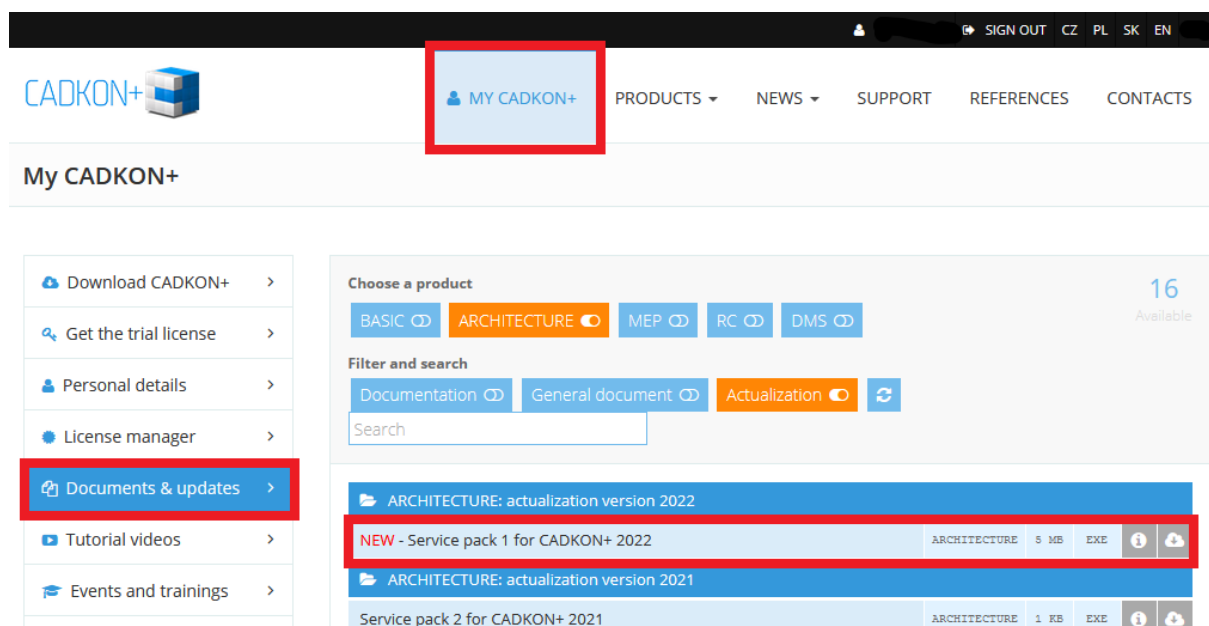
- **Configure CADKON+** (in cases when no program update is available and the newest version of CADKON+ 2022 is installed on the particular computer).



## Installation on a computer with already installed CADKON+ 2022

You have received the Installation file *SetupCadkonPlus\_2022.exe* as a link in an email from Graitec company or you can download it from [www.cadkon.eu](http://www.cadkon.eu).

To download it from [www.cadkon.eu](http://www.cadkon.eu) you need to sign up (register) and go to a section „MY CADKON+“ → „Documents and updates“.



### Installation process

If you have CADKON+ 2022 already installed on your computer, proceed as follows:

1. Download the updated installation file *SetupCadkonPlus\_2022.exe*.
2. Close CADKON+.
3. Run the downloaded file *SetupCadkonPlus\_2022.exe*.
4. Click on „Update CADKON+“, and continue in the installation.
5. When the installation is completed, click on „Finish“.

**Warning:** *The program update cannot be uninstalled separately.*

**Note:** *By Service Pack 1 installation, the **Slovak add-on** (an add-on modifying CADKON+ Architecture outputs into the Slovak language) will also be updated, if it is installed.*

### Verification of Service Pack 1 version

If you need to verify the installed Service Pack 1 version, proceed as follows:

1. In Start menu (Windows) go to Control Panels/ Programs/ Programs and functions.
2. In the list of all installed programs, find CADKON+ **2022.1**. In Details of the record, you will find the pack label **22.1.18** and the installation date.

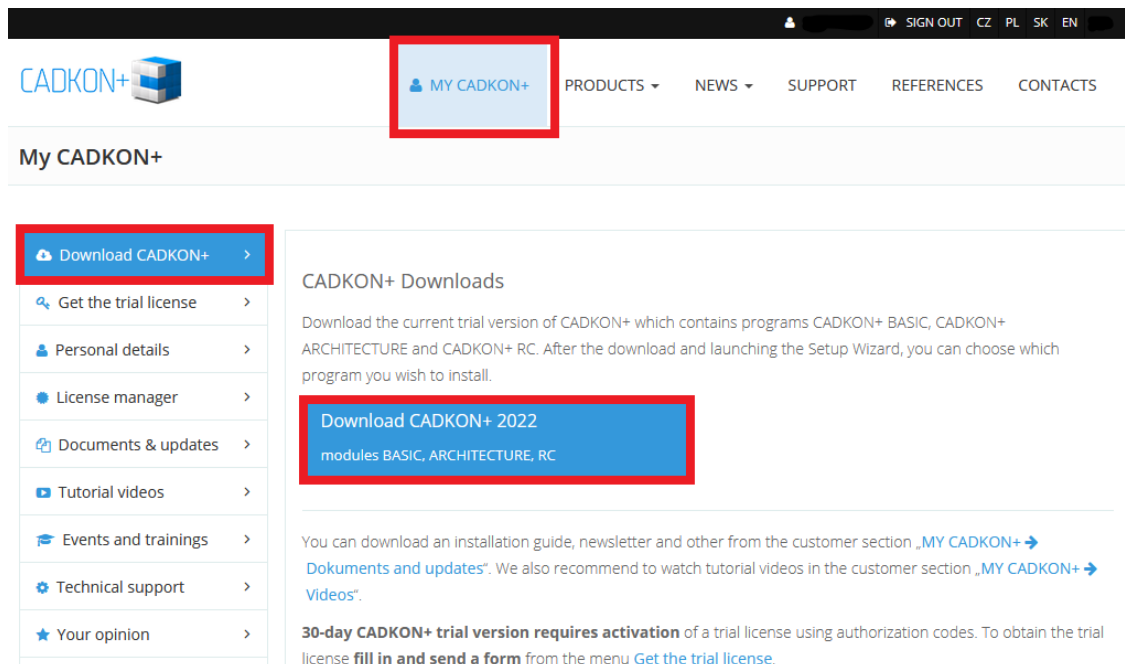
## Installation on a computer without CADKON+ 2022

You can install CADKON+ 2022 on a computer with no CADKON+ installed using an updated exe file *SetupCadkonPlus\_2022.exe*, which you have received as a link in an email from Graitec company or you can download it from [www.cadkon.eu](http://www.cadkon.eu).

To download from [www.cadkon.eu](http://www.cadkon.eu), you have to sign up (register) and go to section „MY CADKON+“.

SIGN IN SIGN UP CZ PL SK EN

SUPPORT REFERENCES CONTACTS



The screenshot shows the CADKON+ website interface. At the top, there is a navigation bar with a user profile icon, a 'SIGN OUT' button, and language selection options (CZ, PL, SK, EN). Below this is a secondary navigation bar with the CADKON+ logo and a 'MY CADKON+' button, which is highlighted with a red box. To the right of 'MY CADKON+' are links for PRODUCTS, NEWS, SUPPORT, REFERENCES, and CONTACTS. The main content area is titled 'My CADKON+'. On the left, there is a sidebar with a 'Download CADKON+' button, also highlighted with a red box, and a list of links: Get the trial license, Personal details, License manager, Documents & updates, Tutorial videos, Events and trainings, Technical support, and Your opinion. The main content area is titled 'CADKON+ Downloads' and contains text about downloading the trial version. A blue button labeled 'Download CADKON+ 2022' with the text 'modules BASIC, ARCHITECTURE, RC' is highlighted with a red box. Below this, there is text about downloading an installation guide and other resources, and a note about the 30-day trial version requiring activation.

The instructions for the installation can be found in the Installation Guide which is available after you run the CADKON+ installation.

*Note: Installation to a new computer using the updated exe file SetupCadkonPlus\_2022.exe will always perform a new clean installation that will include all officially issued program updates (service pack, hotfix etc.).*

## News for CADKON+ ARCHITECTURE, CADKON+ RC a CADKON+ BASIC

---

### General

- Dialog display optimization with settings for 4K resolution
- When copying data from Microsoft Word 365 or Excel 365 in the Windows clipboard (CTRL+C), such data is now always inserted (CTRL+V) to CADKON+ as OLE objects (texts in the previous version).

### Drawing

- The Array command („\_ARRAY) now remembers last entered values of all settings.
- The Scale command („\_SCALE“) displays the last entered value for an easier repetition.

### Rendering

- The hatch output to PDF quality within the „\_EXPORT“ command.
- Quality of the text output to PDF improved.
- The external printer output to PDF (PDF Creator, Bullzip PDF etc.) quality improved.

### Layout

- New keyboard shortcuts **CTRL+PageUp** and **CTRL+PageDown** to switch between Layout and Model cards implemented.

### Blocks and attributes

- New keyboard shortcuts **CTRL+Enter** to close the attribute editor dialog implemented.
- Presetting of the DWG format in the CADKON+ settings now also affects the output within the Write Block command („\_WBLOCK“).

### Hatches

- Improved hatch boundary detection in high coordinates.
- Improved detection of hatch boundaries around texts.

### Annotations

- New keyboard shortcuts have been implemented to the paragraph and line text editor:  
**CTRL+Delete** to delete the following word and **CTRL+Backspace** to delete the previous word from the positioned cursor.

### Dimensioning

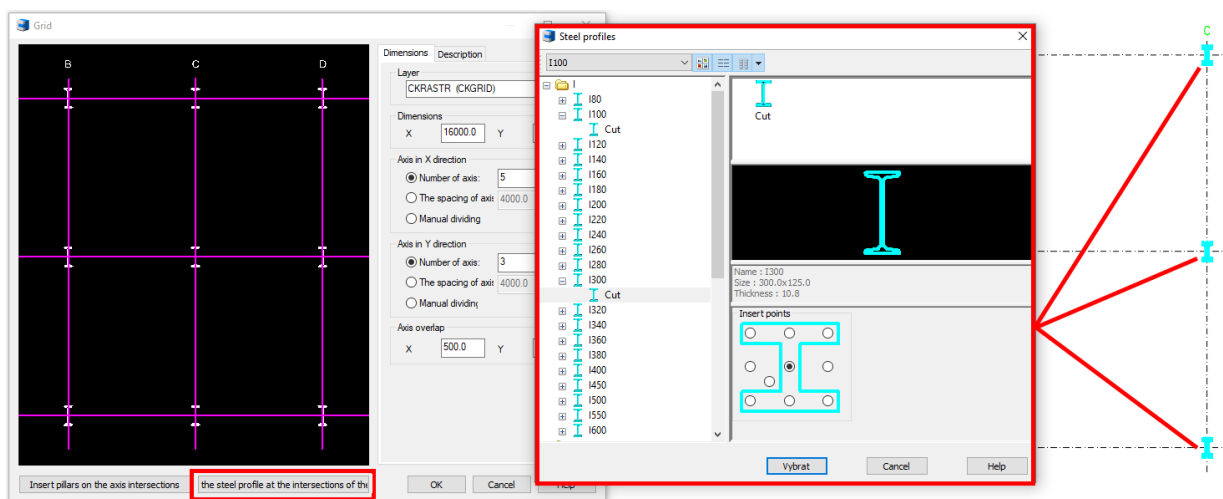
- All dimensioning functions can now work with nested objects inside a block. You can dimension e.g. the radius of an object nested inside a block.



## News for CADKON+ ARCHITECTURE

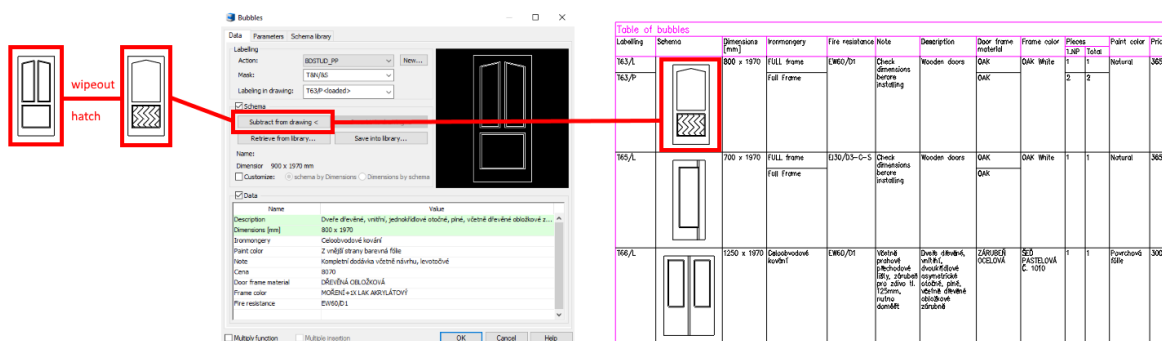
### Steel profiles to Grid

The existing Grid functionality has been extended and it now allows users to insert not only classic columns but also steel profiles at the axes' intersection. If you are designing a grid of a steel hall, you can now insert any profile from the steel profile library at the intersections of the axis grid, which you can of course define at will. When inserting, you can specify a point after which the profile will be inserted.



### Bubbles

Within the viewing scheme of bubbles taken from the drawing, two new entities, which could not be loaded and reported before, were added: hatch and overlap. Therefore, if you draw a scheme in a drawing containing such entities, you can now subtract such scheme from the drawing, save it to the library and report it in a table or insert it into a drawing. Although the hatch or overlap will not appear in the preview in the dialog for entering the bubble parameters, they are correctly inserted when reporting to the bubble table or inserting scheme into the drawing.

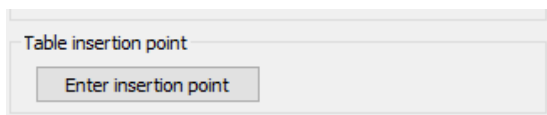


- When using the change scale function on a bubble with a leader, the leader is adjusted to fit the bubble.
- When changes are made and then the Escape key is pressed, the Bubble Manager will display a notification asking whether the user really wants to discard the changes.

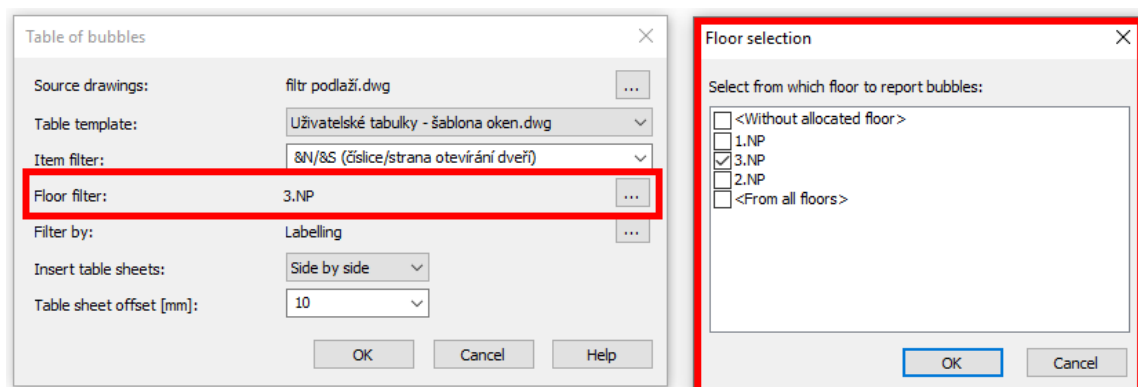


### Custom tables

- When creating a template of a custom table, you have now the option to specify the table insertion point. You can very easily determine at which point the custom bubble table will be inserted into the drawing.



- A floor filter has been added into a dialog for inserting a custom bubble table. You can now specify from which floors the items should be evaluated.



### Lintel and ceiling database update

In version 2022.1, you will find an updated database of lintels and ceiling systems based on the current technical data sheet of the most used manufacturers. At the same time, we have added new product lines, especially the Ytong NBP, Liapor PRZ, PZ; Porotherm UNI lintels and KM Beta MIAKO and HURDIS2; Betong, Prefa Brno ceiling systems and more.

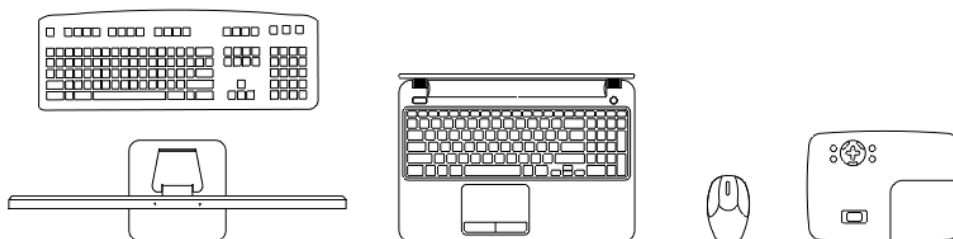
Precast database (YTONG)

|                           | Labelling       | Length [...] | Width [mm] | Height [...] | Max. openin... | Weight [kg] | qu [kN/m]   | Deso ^ |
|---------------------------|-----------------|--------------|------------|--------------|----------------|-------------|-------------|--------|
| HELIZ                     |                 |              |            |              |                |             |             |        |
| HELIZ - Roletové překlady | PTH KP 11,5/75  | 750          | 115        | 71           | 500            | 12.0        | unspecified |        |
| POROTHERM                 | PTH KP 11,5/100 | 1000         | 115        | 71           | 750            | 16.0        | unspecified |        |
| POROTHERM VARIO UNI       | PTH KP 11,5/125 | 1250         | 115        | 71           | 1000           | 20.0        | unspecified |        |
| YTONG                     | PTH KP 11,5/150 | 1500         | 115        | 71           | 1250           | 24.0        | unspecified |        |
| RZP                       | PTH KP 11,5/175 | 1750         | 115        | 71           | 1500           | 28.0        | unspecified |        |
| BATIMA                    | PTH KP 11,5/200 | 2000         | 115        | 71           | 1750           | 32.0        | unspecified |        |
| MONTRAZ                   | PTH KP 11,5/225 | 2250         | 115        | 71           | 2000           | 36.0        | unspecified |        |
| KMB Sendwix               | PTH KP 11,5/250 | 2500         | 115        | 71           | 2250           | 40.0        | unspecified |        |
| LIAPOR                    | PTH KP 11,5/275 | 2750         | 115        | 71           | 2500           | 44.0        | unspecified |        |
| BS-GROUP                  | PTH KP 11,5/300 | 3000         | 115        | 71           | 2750           | 48.0        | unspecified |        |
| HODOTHERM                 | PTH KP 14,5/75  | 750          | 145        | 71           | 500            | 13.5        | unspecified |        |
| PORFIX                    | PTH KP 14,5/100 | 1000         | 145        | 71           | 750            | 18.0        | unspecified |        |
|                           | PTH KP 14,5/125 | 1250         | 145        | 71           | 1000           | 22.5        | unspecified |        |
|                           | PTH KP 14,5/150 | 1500         | 145        | 71           | 1250           | 27.0        | unspecified |        |
|                           | PTH KP 14,5/175 | 1750         | 145        | 71           | 1500           | 31.5        | unspecified |        |
|                           | PTH KP 14,5/200 | 2000         | 145        | 71           | 1750           | 36.0        | unspecified |        |
|                           | PTH KP 14,5/225 | 2250         | 145        | 71           | 2000           | 40.5        | unspecified |        |
|                           | PTH KP 14,5/250 | 2500         | 145        | 71           | 2250           | 45.0        | unspecified |        |
|                           | PTH KP 14,5/275 | 2750         | 145        | 71           | 2500           | 49.5        | unspecified |        |
|                           | PTH KP 14,5/300 | 3000         | 145        | 71           | 2750           | 54.0        | unspecified |        |
|                           | PTH KP 7/100    | 1000         | 70         | 238          | 750            | 35.0        | 14.700      |        |
|                           | PTH KP 7/125    | 1250         | 70         | 238          | 1000           | 44.0        | 14.500      |        |
|                           | PTH KP 7/150    | 1500         | 70         | 238          | 1250           | 53.5        | 14.500      |        |
|                           | PTH KP 7/175    | 1750         | 70         | 238          | 1500           | 62.0        | 14.400      |        |
|                           | PTH KP 7/200    | 2000         | 70         | 238          | 1600           | 70.0        | 14.300      |        |
|                           | PTH KP 7/225    | 2250         | 70         | 238          | 1850           | 79.0        | 14.200      |        |

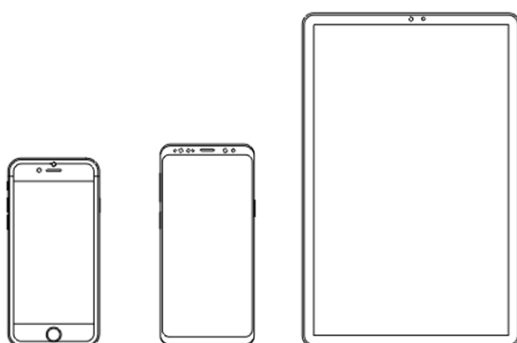
## Blocks

As part of the CADKON+ 2022.1 (SP1) update release, we have prepared new static and dynamic blocks in the block library (\_CK\_INSERT\_M). These are mainly electronics blocks and one handy dynamic block for drawing slopes.

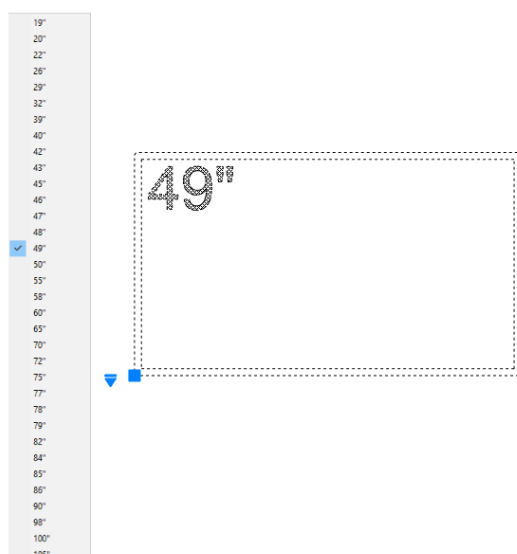
- New blocks of computers, laptops, mice and projectors are added in the Library of Blocks/Floor plans/Office/Computers.dwg.



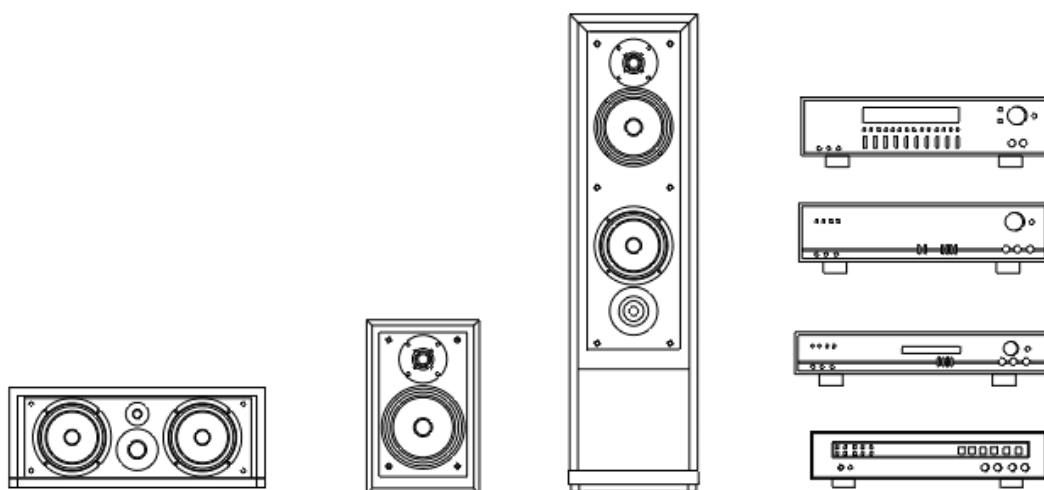
- New dynamic blocks of mobile phones (Iphone 7, Iphone 12, Samsung S9) and tablet (Samsung TAB S6) are added in Library of Blocks /Floor plans/Office/Mobile phones and tablets.dwg



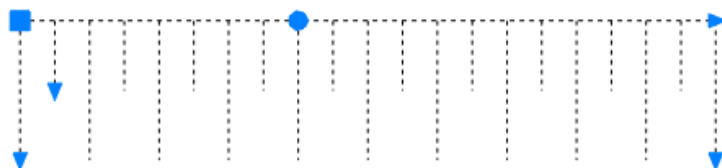
- A new dynamic block of a TV with 35 visibility states (sizes) from 19-inch to 105-inch (LCD) was added in the Library of Blocks /Views/Housing/TV – diferent sizes\_SF.dwg



- Blocks of amplifiers, CD players and speakers are added in the Library of Blocks /Views/Housing/hi-fi\_SF.dwg.



- A dynamic block for drawing slopes is added in the Library of Blocks/Symbols, Marks/Marks KM.dwg.



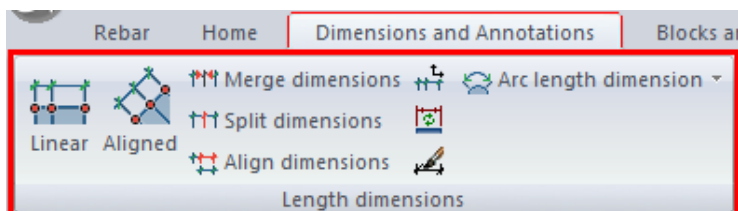
### Others

- The drawing name function now inserts the drawing name as a so-called field. When the drawing name changes, simply regenerate the drawing and the fields are updated.
- When changes are made and then the Escape key is pressed, the Lintel Manager will display a notification asking whether the user really wants to discard the changes.

## News for CADKON+ RC

### New length dimensioning tools

For more effective work with dimensions, a number of functions are now available. You can find them in the Dimensions and labels in the Length Dimensions panel:

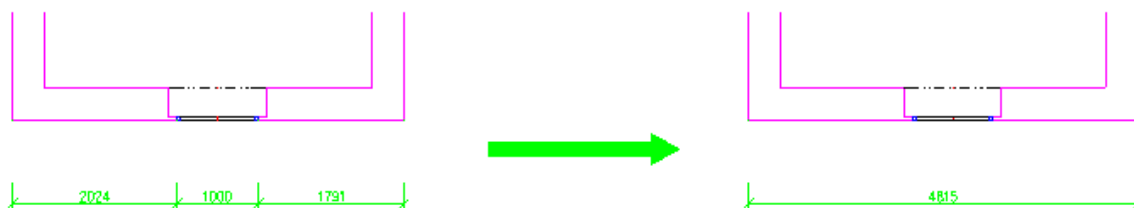


Pict. Length Dimensions panel with new functions

Following new features are available:

- **Join dimensions** is used to merge selected dimensions into one.

Selecting adjacent chain dimensions merges them into a single dimension and automatically updates the dimension text. Adjacent dimensions in multiple dimension chains can be selected within the command. The number of selected adjacent dimensions is not limited.



- **Divide dimensions** is used to divide the selected dimension into several individual dimensions.

The dimension chain can be divided into several dimensions by adding another extension line. The text of the dimensions is automatically updated.

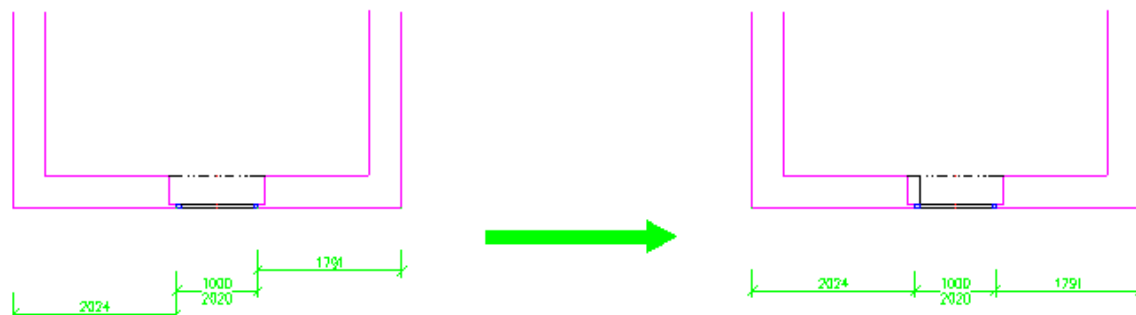
Enter one or more points to divide the dimension. Press Enter to finish entering points. Then select a dimension or dimensions (multiple selected dimensions must be parallel to each other) which you want to divide. A new extension line is created at each entered point.



- **Align dimensions** is used to align several dimensions to one plane.

A selection of a defining dimension is required to which the subsequently selected dimensions will be aligned. Aligned dimension lines must be parallel to each other, otherwise they will not be aligned in one plane.

This function is useful when the user creates a chain dimension and later discovers that it could be bound to another already existing dimension chain, which are located elsewhere and it is desirable to link (align) to the dimensions just created.



- **Update according to set UCS** is used to change to coordinate system on the dimension object according to the currently set UCS.

This function can be useful for resolving a situation, when the dimensions still retains information after being copied about the UCS in which it was created and when rotating such copied dimension in another UCS, its text moves according to the original UCS. Such dimension text becomes illegible in the current UCS and it is desirable to rotate the text according to the current UCS.

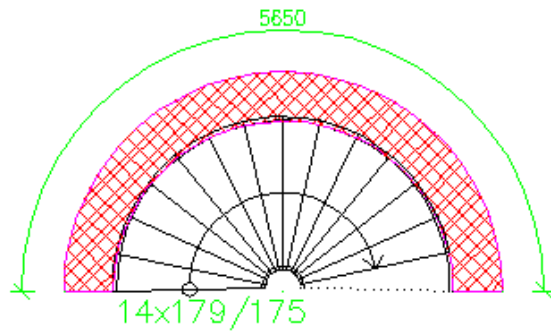
Selection of dimensions that should be updated according to the currently set coordinate system is required.

- **Dimension update** is used to update already drawn dimensions according to the new settings.

If you make any changes to the dimension settings, such changes will only take effect on the newly created dimensions. However, if you want the settings change to take effect on dimensions created previously, you can use this function.

Selection of dimensions that should be updated according to the current dimension settings is required.

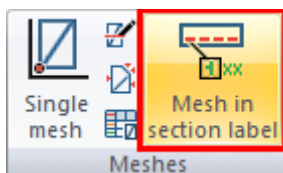
- **Set dimension style by selected dimension**
- **Arc dimension:** This function can be used to dimension any arc, arc wall, etc. Just click on the arc you want to dimension and specify the dimension offset. An arc dimension with the current dimension style will be created and will be automatically placed in the dimension layer.



- **Arc dimension with radius:** This function is similar to Arc dimension but radius is added to the arc.
- **Arc segment dimension:** Select an arc or one edge of an arc wall, specify the dimension offset from the arc and then using two points you determine the part of the arc that you want to dimension.
- **Arc segment with radius:** This function is similar to Arc segment dimension but radius is added to the length of the selected arc segment.
- **List length of the Arc segment:** Specify the arc by entering three points and the arc length in current units is displayed in the command line.

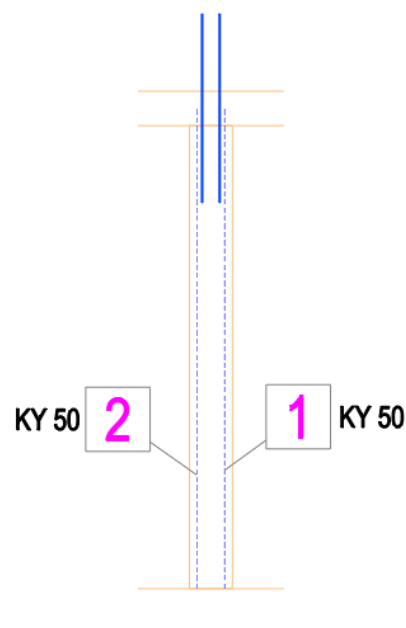
### Mesh in section label

A new command (AbRcFabricLabel) is designated for creating mesh descriptions displayed perpendicular to the section.



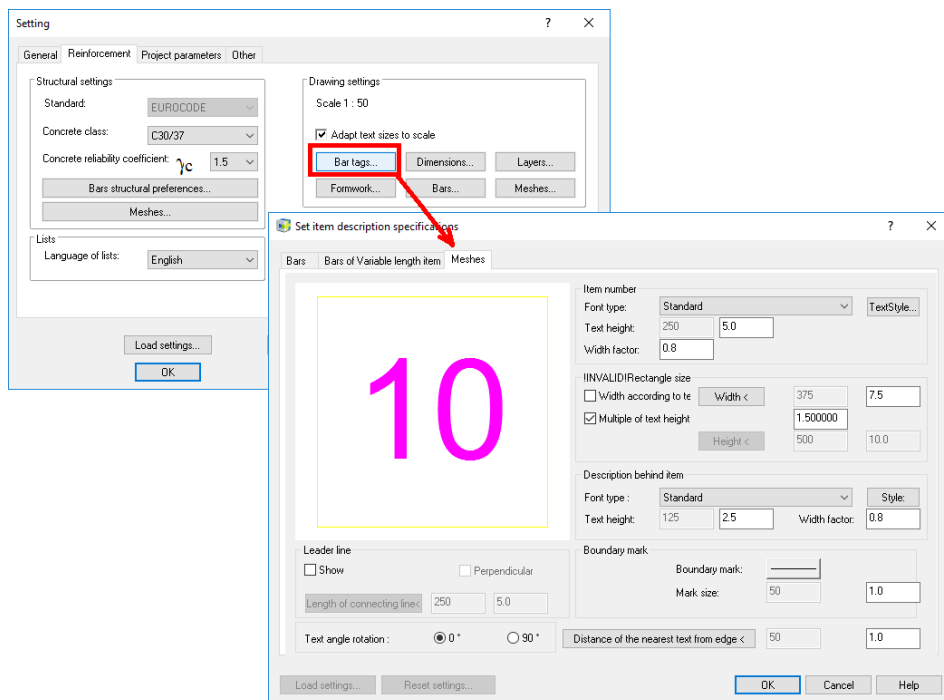
Pict. The icon of the Mesh in section label function

### SECTION 3-3



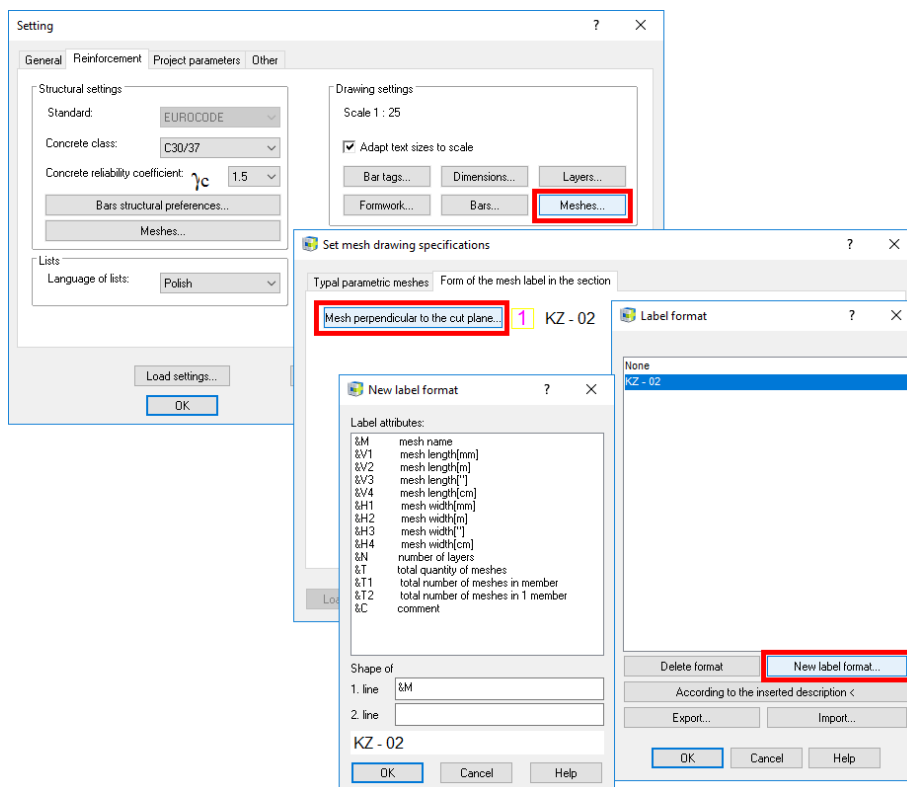
Pict. Example of mesh description

- The label appearance settings is done in the dialog Settings -> Reinforcement tab -> Item description -> Meshes tab.



Pict. Description appearance settings

- The content of the description is made in dialog Settings -> Reinforcement tab -> Meshes -> Mesh in section description shape.



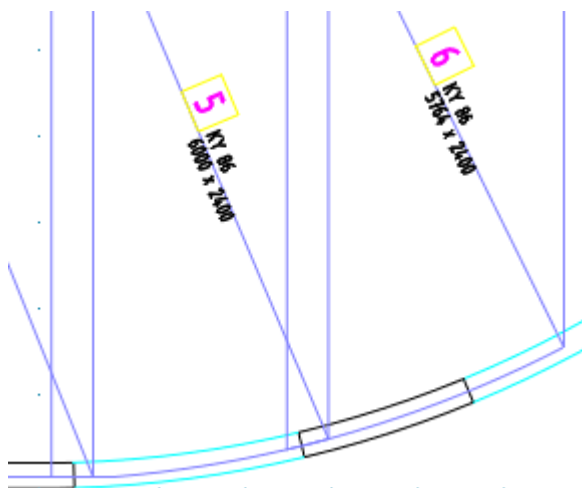
Pict. Description content settings



### Improved work with meshes

For more efficient work with reinforcement meshes, a number of improvements have been implemented which involve both the mesh objects themselves and the existing CADKON+ RC functions:

- Trimming meshes according to the boundary with arcs



- 2D mesh object enhancement – ability to stretch and resize using a node in the middle of the outline polyline.
- 2D mesh object enhancement – snapping: Additional options to snap to the polyline forming the mesh outline: half, perpendicular, intersection, closest.
- Commands for controlling item visibility: The commands Isolate selected items, Turn off selected items and Turn on selected items now work also with meshes.
- Mesh library: The mesh list in the library can now be sorted in ascending/descending order according to the selected mesh parameter. The sorting is done by clicking on the header of the column with the parameter according to which the sorting should be performed.
- Display of mesh in section vs. View depth of 2D section: Meshes out of the section view depth are now not displayed.
- Layer definition for non-orthogonal section: Unlike orthogonal sections (parallel to the floor plan, front view or side view), where the coverage value is calculated from the edge of the reinforced element, for the non-orthogonal section the coverage is calculate from the section plane, which makes reinforcing of complex constructions easier.

### Other

- Commands **Move hatch to background** (\_HATCHTOBACK) and **Move all notes to front** (\_texttofront) were made available in the Basic ribbon in the Modifications panel.
- Drawings created in CADKON + 2022 RC SP1 are not backward compatible with previous versions, therefore we recommend backing up drawings from older projects before converting them to the new version.

## Solved problems common for CADKON+ ARCHITECTURE, CADKON+ RC and CADKON+ BASIC

---

### Settings migration

- Settings migration creates duplicities of some specific floor structures.
- Browsing some migrated blocks is slow after the block library migration.

### General

- Incorrect icon display on 4K monitor in the Open dialog.
- If the drawing is open as read-only, the same drawing cannot be saved within a different instance.
- After saving the workspace, some toolbar options from the context menu disappear.
- If transparency is turned on, the color area specified within the Area command „\_AREA“ is not displayed.
- The contents of layer/ colors/ linetype/ lineweight controls are incorrectly redrawn, when they are place in the quick access panel.
- Incorrect display of command icons when custom size of Windows DPI font is set.
- Incorrect command to edit a polyline in the right-click context menu.
- Snap mark is not visible when handling full fills (images/SOLID etc.).
- Linetype preview are mirrored in the linetype management dialog.
- The program does not respond when loading a specific DWG content.
- The program does not respond when opening a specific DWG content.
- Non-functional crosshair magnification control.
- The color resolution of the coordinate system icon for active and inactive viewport does is not displayed.

### Drawing

- Incorrect order of prompts in the command line when drawing a circle using tangent-tangent-radius.
- The program enables the user to close the drawing without notification about the option to save changes after inserting an OLE object.
- ORTO or POLAR cannot be used in the Displacement option within the Move/ Copy/ Stretch commands.
- When you cancel the Block definition command „\_BLOCK“ , the zoom slowly returns to the previous view.
- While inserting a block, an angle cannot be specified using parallel SNAP when rotating the block.
- Non-functional Offset in specific cases in high coordinates.
- Program failure when creating Offset to polylines with specific vertices.
- The Array function („\_ARRAY“) does not work correctly with locked objects.

### Modification

- Incorrect detection to crop boundaries when trimming a specific Spline.
- The Trim function does not work reliably with multiple selection in cases with UCS is set.
- Quick trim and Quick extend do not work reliably with SHIFT key.

- Cyclic selection cannot be used within Extend and Trim.
- Program failure when editing contents of an AutoCAD dynamic table.

### Annotations

- The program does not retain the setting of „MTEXTTOOLBAR“ variable (a variable that controls the toolbar display when creating and editing the mtext).
- The „Error 0.000r“ is displayed when replacing text using Find command („\_FIND“).
- When copying text content using CTRL+C and CTRL+V within the editor, the size of the pasted text is changed (the text is always an order of magnitude smaller).
- When copying text content using CTRL+C and CTRL+V, the width factor of the copied text is not displayed correctly in the preview.
- When copying formatted text content using CTRL+C and CTRL+V, the fraction formatting dialog is displayed when cyclic pasting the text.
- Incorrect formatting of specifically formatted Mtext in the Mtext editor.
- When editing Mtext, the line spacing for some lines is changed.
- An incorrect dimension style override is created after using description Leader text behind.
- Incorrect display of AutoCAD dynamic table contents.
- Dtext alignment does not work within “Customize”.
- Program failure when editing contents of a specific Multileader.

### Dynamic input

- Incorrect entry of line text when the Dynamic input is active and the variable „DTEXTED“=1 (a variable that controls display option of the dialog when editing a line text).
- When dynamic input is active, command or Alias cannot be confirmed by pressing space bar.
- Poor image preview quality and incorrect translation of some strings in dynamic input settings.
- Incorrect start-end-radius arc input when the dynamic input is active.
- Non-functional option Angle within the Line command when the Dynamic input is active.
- Incorrectly updated preview when drawing a rectangle if the dimensions are entered using dynamic input.
- Dynamic input does not register entry using a diacritical mark and letter.
- Alias cannot be confirmed using right click when the dynamic input is active.
- The dynamic menu list scrolls incorrectly.

### Blocks and References

- Image underlay into a drawing is impossible for images with long names.
- When the Xref path is changed, the Xref is disconnected.
- When updating a specific reference, complex linetypes are no longer displayed in the main drawing.
- When changing a specific dynamic block parameter, the text size changes incorrectly.
- Program failure when inserting a block with attributes if ATTDIA = 1.
- The attribute editing dialog does not retain the last entered window size and location.
- Program failure when editing attributes, when the new text cursor color indicator is turned on in Windows.

### Layer control

- The button Select objects and their layers within Browse layers function is not working.

- The list of layers in the status bar is not sorted alphabetically.
- The Layer Explorer does not retain the set column width if the panel is docked on the same side with another Explorer (dimension style, block etc.).

### Hatches

- Boundaries cannot be removed while editing hatches.
- Non-functional option Move to background when the Create separate hatches option is active.
- Program failure when adding a hatch boundary using command line options while the dynamic input is active.
- Program failure when attempting to hatch any object in specific content of the drawing.
- Boundaries cannot be added to an existing hatch using command line options.
- Incorrect boundary detection around dimension texts.
- Hatch alignment malfunction.
- The "Time Stamp" error appears in specific drawings when running hatches in CADKON layers.
- Transparency value for some hatches cannot be changed.
- The value „." (Dot) to set the zero transparency for hatches cannot be used within the „HPTRANSPARENCY" variable.
- Properties from some hatches cannot be copied.
- Incorrect hatch trimming using the Trim function.
- Hatches created by selecting an object cannot be trimmed.

### Properties

- The Properties dialog does not show information about polygon viewport when „PICKSTYLE" = 0.
- Duplicate parameter Fixed extension line length in properties for an oblique dimension.
- Incorrect results of body mass properties.

### Dimensioning

- Non-functional Mtext and Angle options for jogged dimension.
- Non-functional jogged dimension in paper space.
- Incorrect dimension values in paper space with „DIMASSOC" = 1 or 2.
- Program failure when editing and object to which a dimension is associated.
- Background text cannot be turned on for specific Multileaders.
- Tolerance does not respect the current UCS.

### Rendering and publishing

- When loading a project within publishing, the current drawing state is displayed incorrectly.
- The Print dialog does not retain the last state of the "Save changes to layout" option.
- Some inserted images are not published to PDF.
- When printing to PDF, triangular hatch area lines are rendered when transparency printing is turned on.
- Poor printing quality on PDF virtual printers (PDF Creator, Bullzip PDF etc.)
- Images attached to the drawing are not printed when printing to PDF Creator printer with resolution higher than 600 DPI.

- When exporting, the program does not retain the last specified format for saving, the default format for PDF export is always set.

### 3D

- Perspective option in „\_VPOINT“ command is not working.
- „Invalid input“ error when trying to convert 3D objects in a block to 2D „\_FLATTEN“.

## Solved problems for CADKON+ ARCHITECTURE

---

### *Openings*

- When deleting an opening with a French window, the walls are not properly closed.

### *Room descriptions*

- When changing the room area, the room circumference is not automatically updated.

### *Elevation dimensions*

- Non-functional elevation dimensions in drawings with elevation dimensions copied from other projects.
- In specific projects, links between elevation dimensions are lost and they are not updated.
- When editing elevation dimensions/modifying dimensions by settings and changing the text height or frame size, the leader position is not adjusted.
- Non-functional help button in elevation dimensions parameter setting and elevation dimensions editing.

### *Bubbles*

- When selecting multiple items, the actual parameters of all selected items are not displayed in the Bubble manager in the Parameters section.

### *Lintels*

- Unable to save custom lintel type to default database directories.

### *Linked tables*

- Incorrect crossing out of linked tables when saving the drawing if old DWG format is preset.
- The Insert bubble table dialog does not retain the sort by setting.
- The custom bubble table is not crossed out when the dimensions parameter is changed.
- The Room by floor table is not made invalid (crossed out) in specific cases if a room is added within the same floor.

### *Chimneys*

- HELUZ chimneys are not completely rectangular.

### *General*

- Edit scale list function changes the location of some blocks.
- The bubble dialog is displayed incorrectly on the 4K monitor in specific cases with dpi of 225%.

## Solved problems for CADKON+ RC

---

### *Drawing units meters*

For drawings with meters set as drawing units, following issues were fixed:

- Mesh overlap does not display correct values.
- Mesh bending details are too far apart.
- The fillet and diameter change of a bar is not correct.
- Bending detail of bars with dynamic input turned on is not functional.
- Mesh modification does not work properly.

### *Meshes*

- Incorrect insertion/editing of a mesh when its type is inserted in a drawing but it is not in the database.
- If the drawing is not created on the basis of the current CADKON-RC-CZ.dwt template, all bar definition functions in the drawing will display an error message „Unknown exception“.

### *Bars*

- The bar description is not displayed when the section range constraint is active and the description is out of range.
- A drawing created in CADKON RCD containing a bar row description with a slanted bar shape is displayed incorrectly in CADKON+ RC.
- Creating a circular row is in some cases unsuccessful.
- Changing of an item and bar diameter sets incorrect filleting.
- Filleting change dialog does not display actual filleting values but values from bar Settings.
- Filleting cannot be changed to a specified value, the change is always made according to the value in bar Settings.



## Technical support

---

In case of technical issues with CADKON+ installation or functionality, please contact us via our Helpdesk.

Signing in: <http://helpdesk.cadkon.eu/>

Registration <http://helpdesk.cadkon.eu/Registration/Index>

Request a forgotten password: <http://helpdesk.cadkon.eu/Account/ForgotPassword>

CADKON and CADKON logo are registered trademarks belonging to GRAITEC s.r.o.

All other brands, product names and trademarks belong to their respective owners.

© Copyright 2021 GRAITEC s.r.o.

Created by GRAITEC s.r.o. 08.10.2021