

News

CADKON+ 2023 Service Pack 1



www.cadkon.eu

www.cadnet.cz , helpdesk.cadkon.eu , www.graitec.com

CADKON+ 2023 Service Pack 1 News

CADKON+ 2023 Service Pack 1 contains improvements and fixes for CADKON+ ARCHITECTURE, CADKON+ RC and CADKON+ BASIC version 2023.

It is intended for all commercial **CADKON+ 2023** installations (build **23.0.0031**). These are installations downloaded before the 17th of October 2022, which is the date of the Service Pack 1. Installations downloaded after this date already contain the Service Pack 1 and it therefore does not need to be installed separately.

The exact build of the installed CADKON+ can be verified by command „_CKABOUT“, directly in the CADKON+.

Contents:

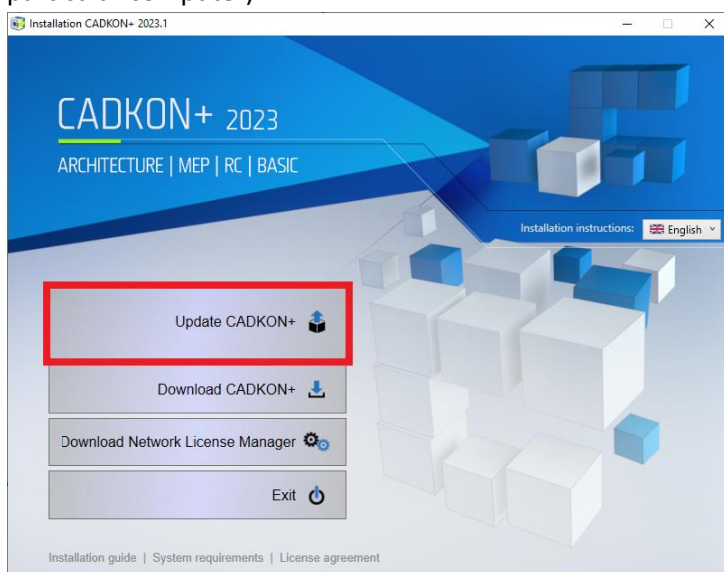
General information about service pack installation	3
Installation on a computer with already installed CADKON+ 2023	4
Installation on a computer without CADKON+ 2023	5
News for CADKON+ ARCHITECTURE, CADKON+ RC a CADKON+ BASIC	7
News for CADKON+ ARCHITECTURE.....	10
News for CADKON+ RC	16
Solved problems common for CADKON+ ARCHITECTURE, CADKON+ RC and CADKON+ BASIC.....	27
Solved problems for CADKON+ ARCHITECTURE.....	29
Solved problems for CADKON+ RC	31
Technical support	33

General information about service pack installation

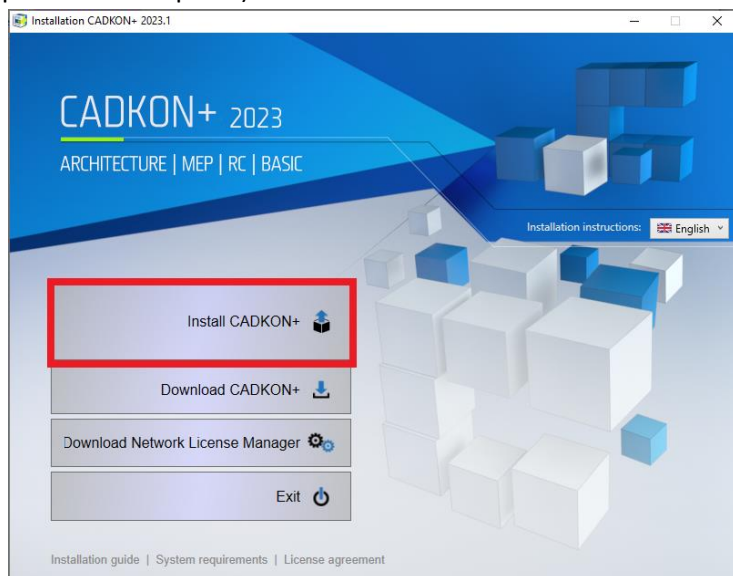
CADKON+ service packs are always part of a CADKON+ online installation. Regardless of the CADKON+ 2023 version you have installed, online update of the program will update all required files to their newest versions.

The service pack installation is carried out using an updated CADKON+ 2023 exe file (*SetupCadkonPlus_2023.exe*). After running the exe file, installation program will automatically identifies whether CADKON+ 2023 is or is not installed and will offer one of the following options:

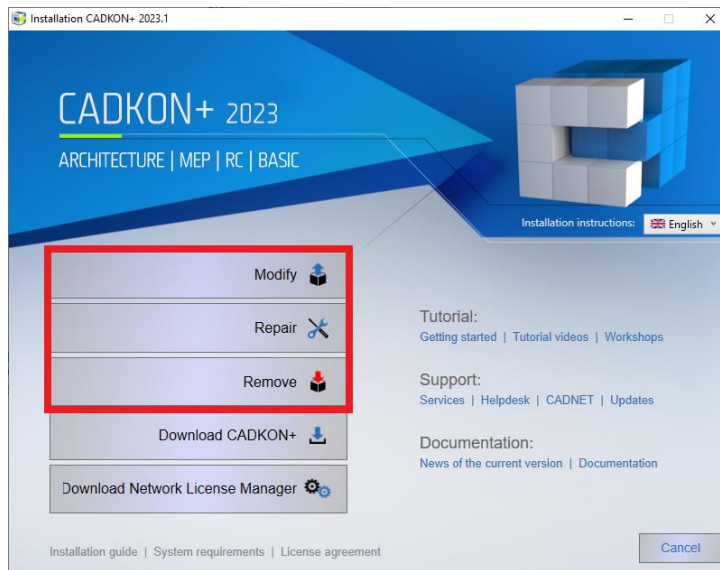
- **Update CADKON+** (in cases when an older version of CADKON+ 2023 is found on the particular computer).



- **Install CADKON+** (in cases when no older version of CADKON+ 2023 is found on the particular computer).



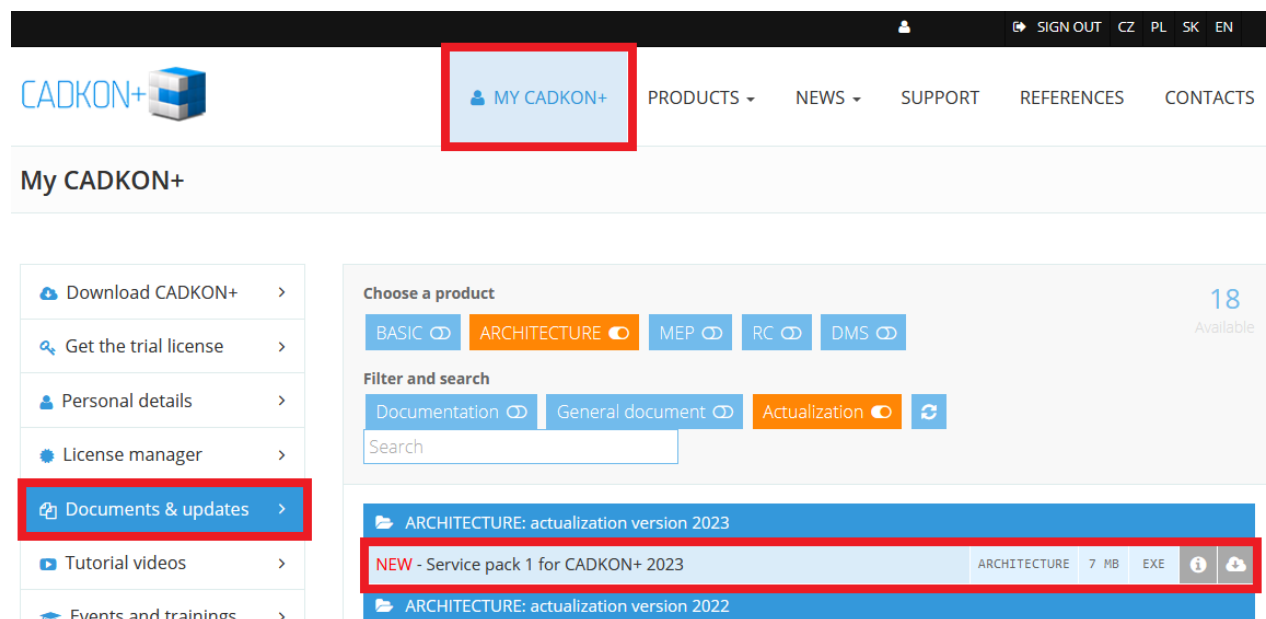
- **Configure CADKON+** (in cases when no program update is available and the newest version of CADKON+ 2023 is installed on the particular computer).



Installation on a computer with already installed CADKON+ 2023

You have received the Installation file *SetupCadkonPlus_2023.exe* as a link in an email from Graitec company or you can download it from www.cadkon.eu.

To download it from www.cadkon.eu you need to sign up (register) and go to a section „MY CADKON+“ → „Documents and updates“.



Installation process

If you have CADKON+ 2023 already installed on your computer, proceed as follows:

1. Download the updated installation file *SetupCadkonPlus_2023.exe*.
2. Close CADKON+.
3. Run the downloaded file *SetupCadkonPlus_2023.exe*.
4. Click on „Update CADKON+“, and continue in the installation.
5. When the installation is completed, click on „Finish“.

Warning: The program update cannot be uninstalled separately.

Note: By Service Pack 1 installation, the **Slovak add-on** (an add-on modifying CADKON+ Architecture outputs into the Slovak language) will also be updated, if it is installed.

Verification of Service Pack 1 version

If you need to verify the installed Service Pack 1 version, proceed as follows:

1. In Start menu (Windows) go to Control Panels/ Programs/ Programs and functions.
2. In the list of all installed programs, find CADKON+ **2023.1**. In Details of the record, you will find the pack label **23.1.42** and the installation date.

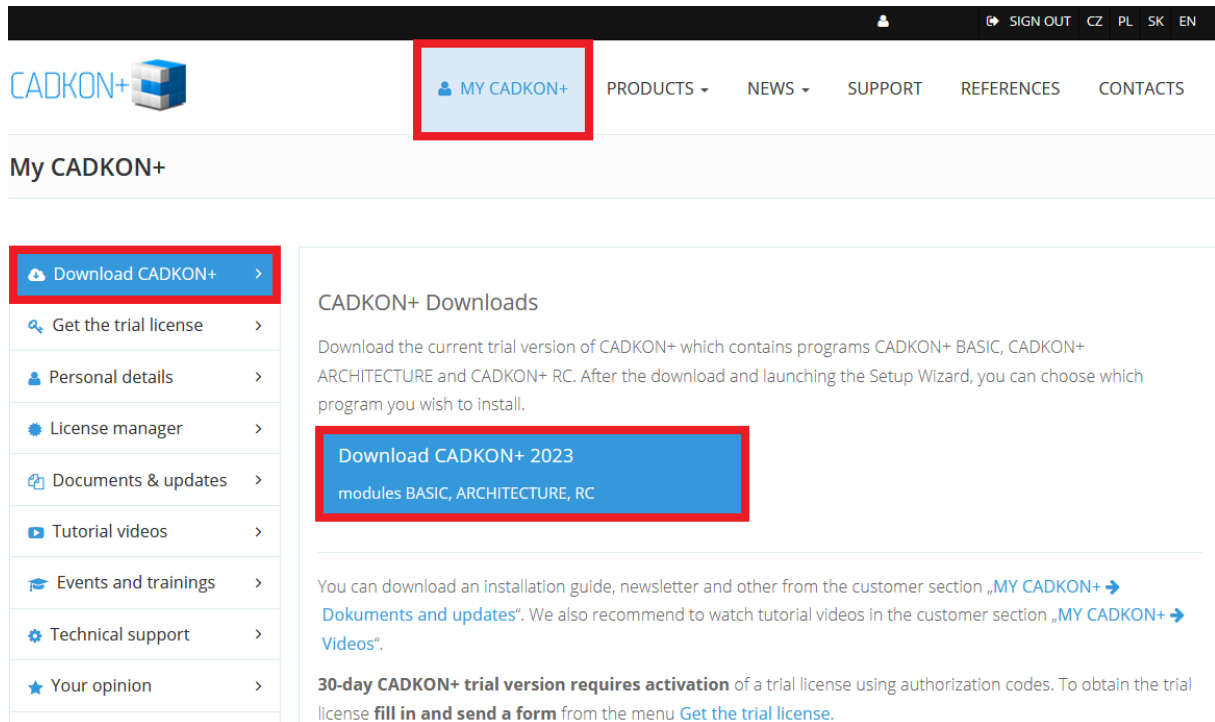
Installation on a computer without CADKON+ 2023

You can install CADKON+ 2023 on a computer with no CADKON+ installed using an updated exe file *SetupCadkonPlus_2023.exe*, which you have received as a link in an email from Graitec company or you can download it from www.cadkon.eu.

To download from www.cadkon.eu, you have to sign up (register) and go to section „MY CADKON+“.

SIGN IN SIGN UP CZ PL SK EN

SUPPORT REFERENCES CONTACTS



The screenshot shows the CADKON+ website interface. At the top, there is a navigation bar with a user profile icon, a 'SIGN OUT' button, and language options (CZ, PL, SK, EN). Below this is a secondary navigation bar with the CADKON+ logo, a 'MY CADKON+' button (highlighted with a red box), and links for PRODUCTS, NEWS, SUPPORT, REFERENCES, and CONTACTS. The main content area is titled 'My CADKON+'. On the left, there is a sidebar menu with several options: 'Download CADKON+' (highlighted with a red box), 'Get the trial license', 'Personal details', 'License manager', 'Documents & updates', 'Tutorial videos', 'Events and trainings', 'Technical support', and 'Your opinion'. The main content area is titled 'CADKON+ Downloads' and contains a paragraph about downloading the trial version. A button labeled 'Download CADKON+ 2023' with the text 'modules BASIC, ARCHITECTURE, RC' is highlighted with a red box. Below this, there is a paragraph about downloading an installation guide and other resources, and a section titled '30-day CADKON+ trial version requires activation'.

The instructions for the installation can be found in the Installation Guide which is available after you run the CADKON+ installation.

Note: Installation to a new computer using the updated exe file SetupCadkonPlus_2023.exe will always perform a new clean installation that will include all officially issued program updates (service pack, hotfix etc.).

News for CADKON+ ARCHITECTURE, CADKON+ RC a CADKON+ BASIC

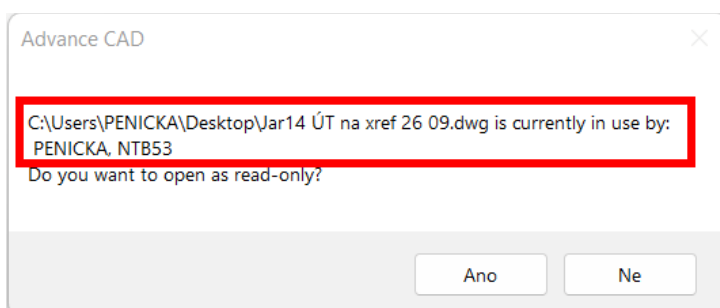


Windows 11 ARM

- CADKON+ runs now on Windows 11 ARM64. CADKON+ products can be installed on Windows 11 ARM64, thus enabling them to run on ARM-based computers running this operating system.

General

- If a project you are opening is already opened on another PC, the program displays information on which PC and under which account the drawing is opened.



Pict. Displayed information about which user and which PC is using the project that is being opened

Settings migration and the original settings restoration

- Settings can now be migrated between different CADKON+ modules. Only menu (workspaces) cannot be migrated, as they are very different for each module and therefore cannot be migrated. All other settings (libraries, printers, rendering tables, etc.) are now migrated between the different modules.
- The migration log contains more structured information about possible migration failure.
- When using program recovery to original settings, the same backup structure is created as when exporting settings. This backup of user data can be easily imported back (previously, the individual files had to be copied manually). The export/import settings tool is available under the Start menu (Windows).
- Actions and Floor Structure Descriptions are now migrated in CADKON+ Architecture.

Drawing

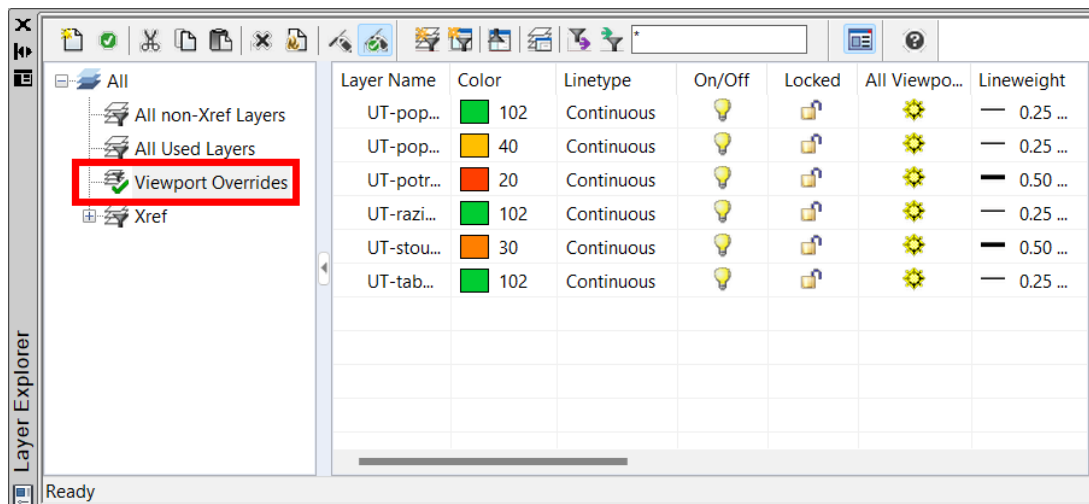
- Default multileader styles for meter and millimeter units are modified (arrow and text sizes changed, arrow changed to open 30) to better match the set scale.
- The Quick Select command speed when removing objects from a selection set is also improved.

Properties

- It is possible to change the initial and final width of polyline segments in the properties.
- When double-clicking on an object, the properties dialog does not close, it always remains displayed.

Layer manager

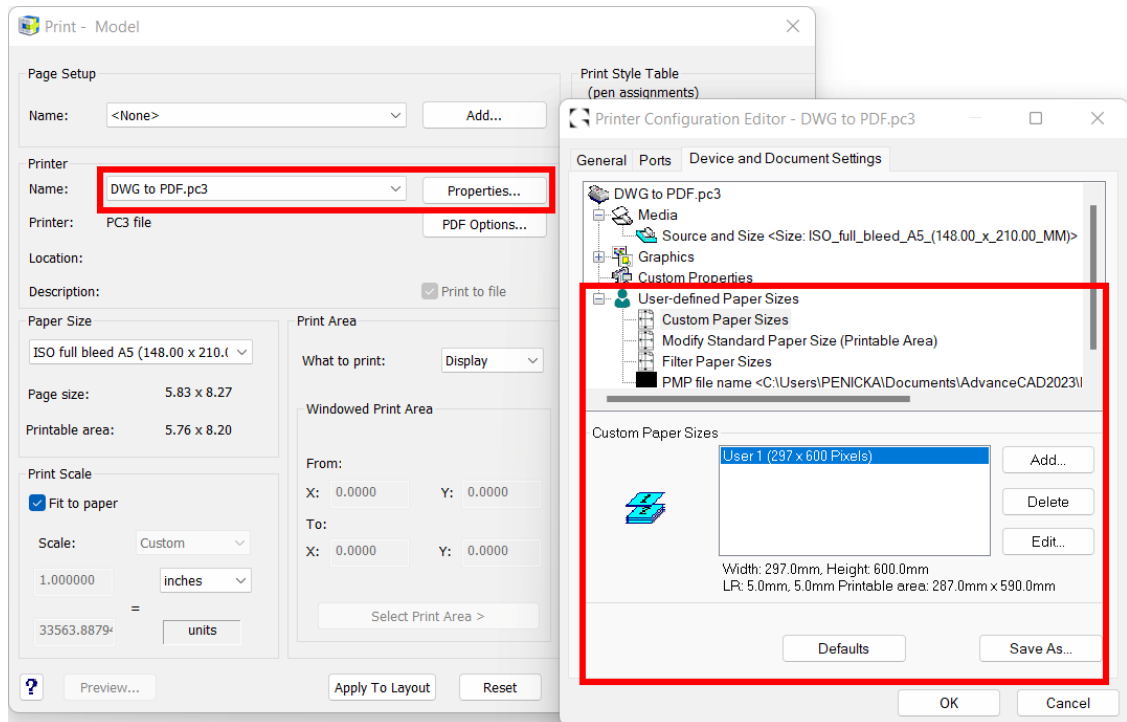
- If a layer filter is active and an Xref is attached, the information that the Xref layers do not match the current layer filter is suppressed. The message is displayed only at user added layer.
- A layer filter is automatically created for layers that have properties overridden (color, line type, line thickness, transparency) in the viewport. In this way, layers with overridden properties can be easily and quickly identified.



Pict. Automatically created layer filter for overridden layers (their properties) in the viewport

Print

- It is possible to define user-defined paper formats for internal printers to PDF, DWF, PNG and JPG.
- Paper formats can be filtered to simplify the list of used formats.
- It is now also possible to edit all formats and change their margins/printable area.
- All settings of paper formats, paper size filters, margins, etc. are saved in a PMP file. This PMP file can be attached to any printer and thus migrate settings between printers.
- When changing the printer, the program tries to retain the set paper format. The condition for maintaining the same paper format when changing the printer is that the printer in question must support and have the relevant format defined.



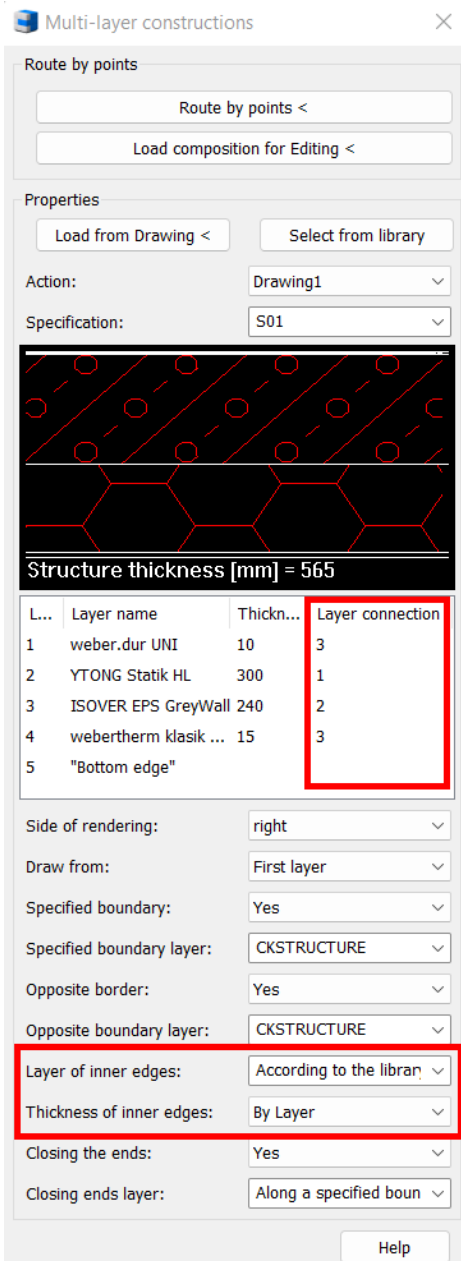
Pict. New print settings options – user-defined formats, paper filters, PMP connection etc.

News for CADKON+ ARCHITECTURE

Connecting multi-layer structures

The existing function has been enhanced so now you can connect individual layers of multi-layer structures at the points of contact of these structures.

- A numeric value can be used to define a layer connection priority for each layer
- When connecting multi-layer structures, the connection of the individual layers is then governed by index values and layer names
- The lower index layer will pass through the higher index layer. Layers of the same name and index are merged.



Multi-layer constructions

Route by points

Route by points <

Load composition for Editing <

Properties

Load from Drawing < Select from library

Action: Drawing1

Specification: S01

Structure thickness [mm] = 565

L...	Layer name	Thickn...	Layer connection
1	weber.dur UNI	10	3
2	YTONG Statik HL	300	1
3	ISOVER EPS GreyWall 240		2
4	webertherm klasik ...	15	3
5	"Bottom edge"		

Side of rendering: right

Draw from: First layer

Specified boundary: Yes

Specified boundary layer: CKSTRUCTURE

Opposite border: Yes

Opposite boundary layer: CKSTRUCTURE

Layer of inner edges: According to the libran

Thickness of inner edges: By Layer

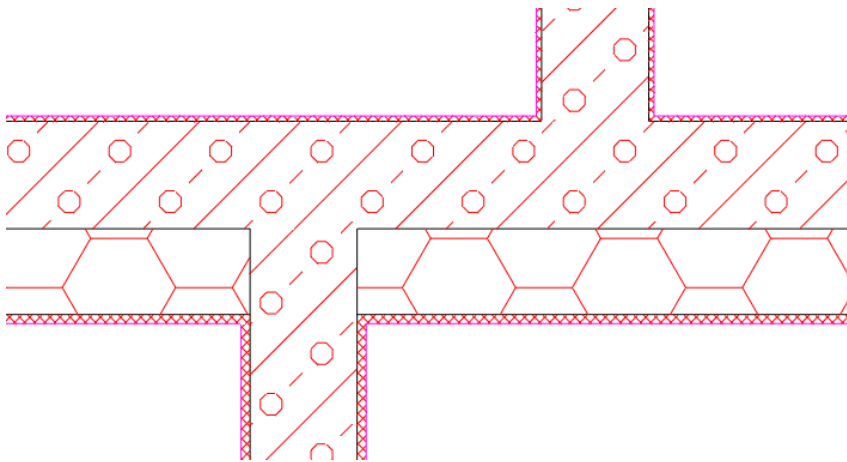
Closing the ends: Yes

Closing ends layer: Along a specified boun

Help

Pict. New settings options for connecting layers

- By appropriate adjustment of the layer connection values, you can achieve that the individual layers of the multi-layer structure connect as you need them to.



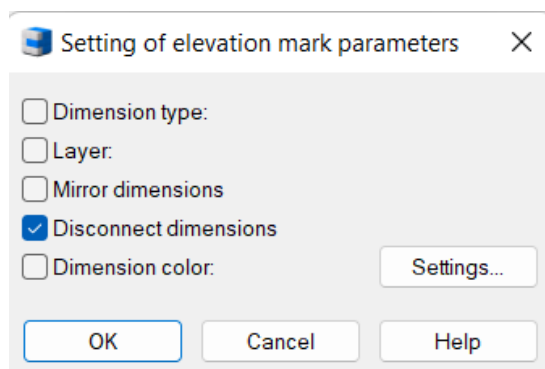
Pict. Demonstration of multi-layer structure connection

- Use of this functionality is wide. You can connect sandwich walls in floor plan view, but also individual layers in a multi-layer structure cut.

Disconnect elevation marks

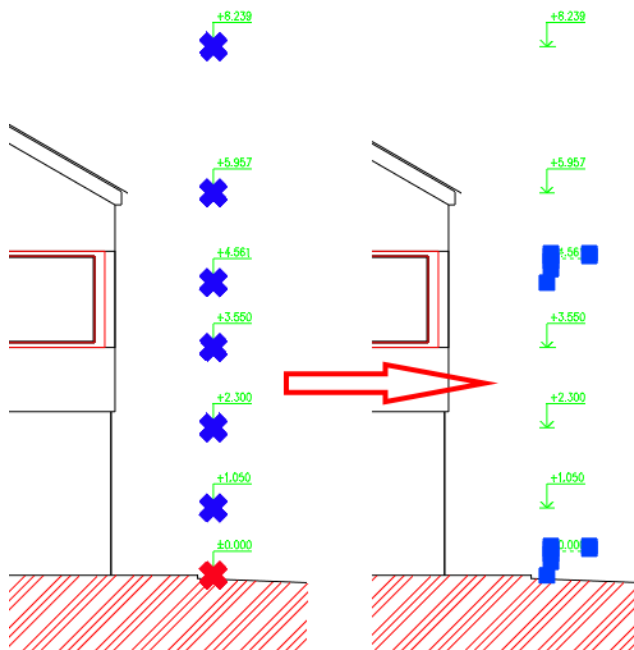
Based on requests, we have extended the functionality of the elevation marks to include the ability to disconnect elevation marks. By default, the elevation marks react to changes in position relative to the base. However, in some cases, this behavior was not suitable for users and they requested the ability to disconnect the dimensions so that when moving, for example moving a whole section, the dimensions are not updated.

- Rendered elevation marks can be disconnected so that they are no longer updated, e.g. when moving, copying, etc.



Pict. The disconnection is done using the Elevation mark edit dialog

- Disconnected elevation marks do not display any glyph after being selected in the drawing (neither the base red cross nor the blue cross of the base-bound dimensions are displayed).



Pict. Example of disconnected elevation marks and their display after being selected in the drawing

- Disconnected elevation marks can be reconnected at any time to reactivate them.

Optimising the working speed with elevation marks

Based on your feedback, we have significantly improved the speed of working with elevation marks. In large drawings where there were a large number of dimensions - usually more than 100, there was a delay in displaying glyphs (blue and red crosses) showing the base and the associated dimensions when marking dimensions and some operations with elevation marks.

- Speeding up the marking of elevation marks with glyphs when marking them in the drawing.
- Quicker elevation mark marking when running the Edit base/Change base of existing dimensions.
- Quicker elevation mark marking when running the Edit base/Change base of existing dimensions/ Select dimensions for changing the base.

To illustrate, table below show speed comparison of CADKON+ 2023 and CADKON+ 2023.1 (Service Pack 1) on real drawings from users:

	CADKON+ 2023: Drawing 1 (244 height dimensions)	CADKON+ 2023.1: Drawing 1 (244 height dimensions)	CADKON+ 2023 Drawing 2 (186 height dimensions)	CADKON+ 2023.1 Drawing 2 (186 height dimensions)
Designation of height dimensions using glyphs when selecting in the drawing	11 seconds	Immediately	6 seconds	Immediately
Marking of height dimensions when starting the function Editing bases/ Changing the base of existing dimensions	12 seconds	Immediately	11 seconds	Immediately
Marking of height dimensions when starting the Edit bases function/ Change the base of an existing dimension/ Select a new base	24 seconds	7 seconds	13 seconds	5 seconds

Pict. Comparison of elevation marks speed in CADKON+ 2023 and 2023.1

Optimizing the updating speed of room-by-floor tables and custom tables

The working speed of updating room-by-floor tables and custom bubble tables has been greatly improved. In drawings with a large number of room descriptions and the room-by-floor tables (or bubbles and user bubble tables) generated from them - usually more than 100, updating these tables was greatly accelerated.

- Speeding up the bulk update of room-by-floor tables and custom bubble tables.
- Acceleration of table detachment.
- Acceleration of table attachment.

To illustrate, table below show speed comparison of CADKON+ 2023 and CADKON+ 2023.1 (Service Pack 1) on real drawings from users:

Action	CADKON+ 2023: Drawing 12MB (297 room descriptions)	CADKON+ 2023.1: Drawing 12MB (297 room descriptions)
Update 12 tables (297 room descriptions)	197 seconds	18 seconds
Disconnecting the table	52 seconds	11 seconds
Connecting the table	55 seconds	11 seconds

Pict. Comparison of table generating speed in CADKON+ 2023 and 2023.1

The speed of individual operations has been improved by 80% - 90%. Working with room-by-floor tables or custom tables has been optimized to make working with them faster and more comfortable.

Crossing out and updating dynamic room-by-floor tables

CADKON+ 2023 brought the possibility to generate dynamic tables. We are now improving the possibilities of using dynamic tables. Specifically, if you generate a dynamic room-by-floor table, in the event of a change in the parameters of the room descriptions, this out-of-date table will be automatically crossed out. You can then update the out-of-date dynamic room-by-floor table with a single click on Update tables.

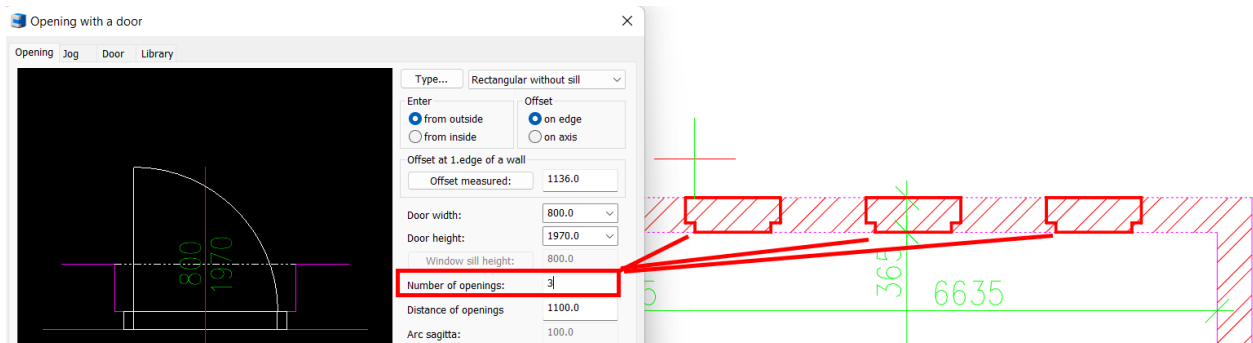
Table of rooms					
Number	Name	Area [m²]	Flooring	Walls	Ceiling
1.01	LIVING ROOM	34,52	CERAMIC TILING	WHITEWASH PAINT	LIME RENDER
1.02	BEDROOM	14,44	CERAMIC TILING	WHITEWASH PAINT	PAINT
1.03	BEDROOM	16,98	STONE TILING	LIME PAINT	PAINT
1.04	HALL	8,12	TERACO	WHITEWASH PAINT	LIME STUCCO RENDER
1.05	BATHROOM	8,12	CERAMIC TILING	WHITEWASH PAINT	TILING
1.06	DINING ROOM	12,74	STONE TILING	WALL PAPER	LIME RENDER
Total area [m²]: 94,92					

Pict. Out of date, therefore crossed out, dynamic room-by-floor table

- Automatic crossing out of the out-of-date dynamic room-by-floor table.
- One click table update.

Showing a preview of a location of multiple openings with a window and door

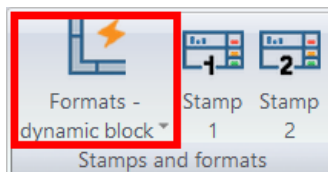
When creating multiple openings with a window or door together, previews of the location in the drawing, so-called glyphs (red highlights), are now displayed for all openings. The user thus has a much better idea of the actual location of the openings.



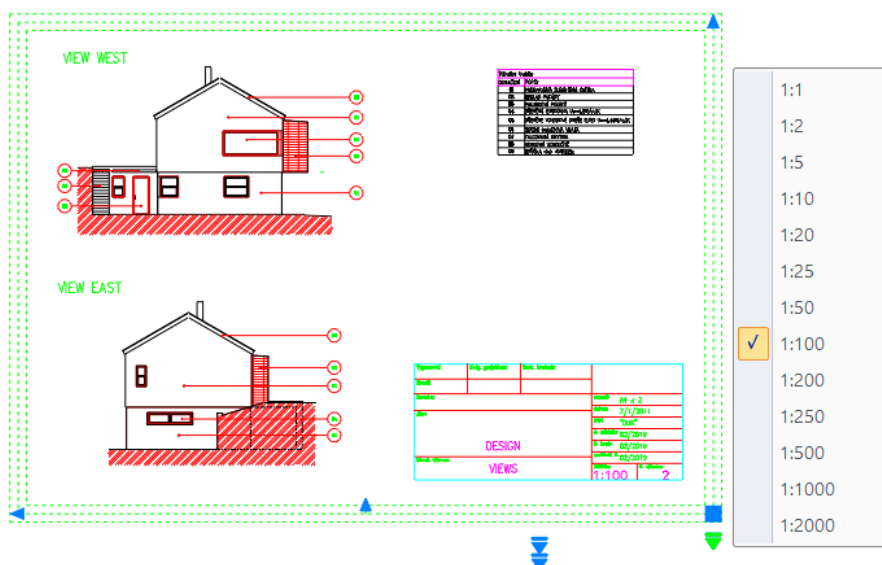
Pict. Preview display of multiple openings location

Formats – dynamic block

There is a new function to insert a paper format dynamic block into a drawing.



- Option to set a whole range of scales and paper formats.
- Setting frame and paper borders.
- Option to adjust the dimensions of the paper format manually - custom formats.

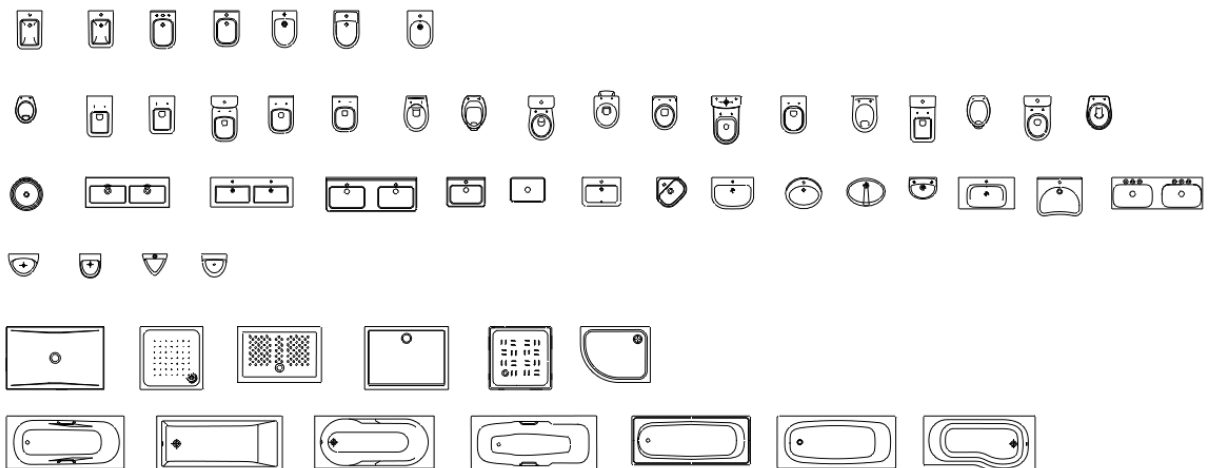


Pict. Paper format dynamic block with a whole range of settings

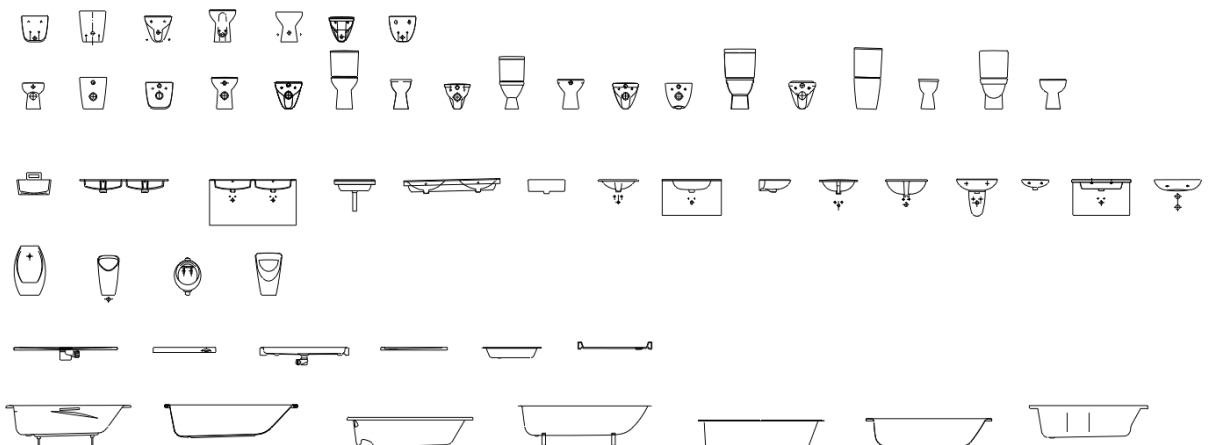
Blocks

The manufacturer JIKA blocks are updated, including new production lines. You have a complete and up-to-date range of bidets, toilets, sinks, shower trays, bathtubs, utility sinks, etc., both in plan view and in perspective view.

- Blocks in drawings Baby baths.dwg, Basins.dwg, Bath tubs.dwg, Bidets.dwg, Closets.dwg, Kitchen accessories.dwg and Sinks.dwg were updated in the Block Library/Floor Plans/JIKA/



- Blocks in drawings Baby baths_SF.dwg, Basins_SF.dwg, Bath tubs_SF.dwg, Bidets_SF.dwg, Closets_SF.dwg, Kitchen accessories_SF.dwg and Sinks_SF.dwg were updated in the Block Library/Views/JIKA/



Other

- Optimizing the appearance of the Description item definition dialog.
- New Slovak template for steel structure report.

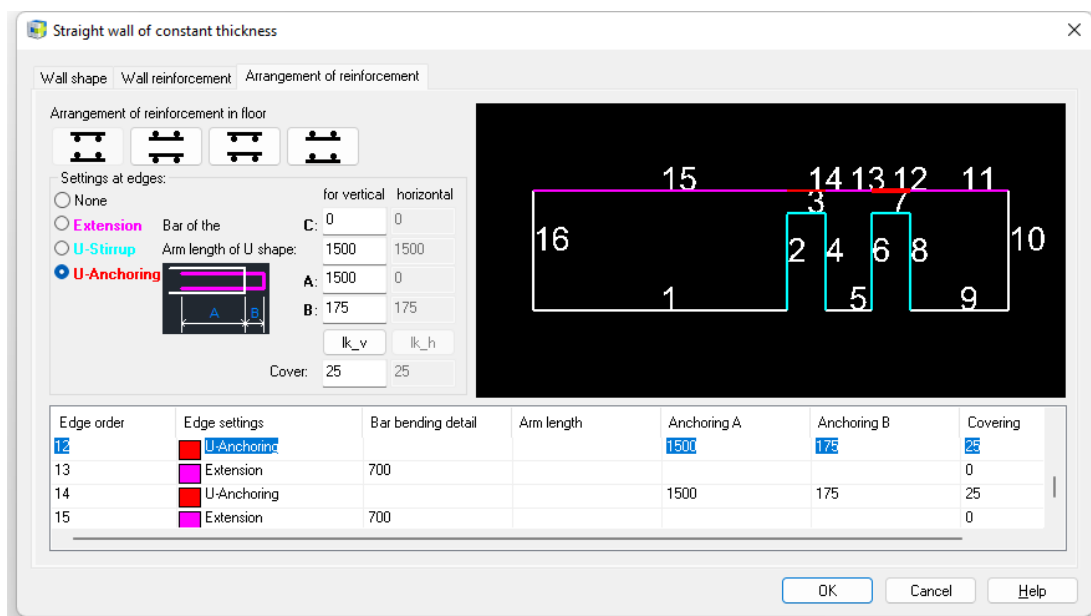
News for CADKON+ RC

Enhancement of the Wall function

CADKON+ RC offers a "Wall" function for wall reinforcement. Based on feedback from users who use this tool, we have improved it in several ways in 2023 Service Pack 1 version.

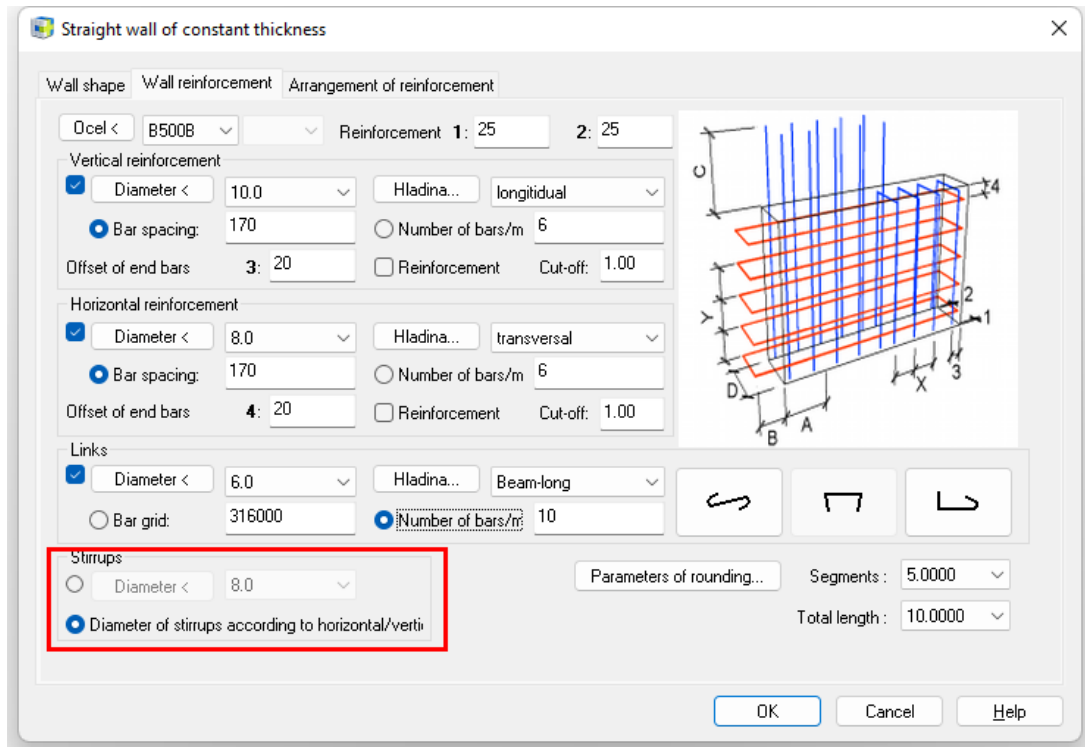
- **Option to adjust the stirrup diameter according to U arms**

In the "Arrangement of Reinforcement" tab, the Wall tool offers the option to define how the reinforcement will be terminated at the edge. In case of the "Edge" and "Anchoring" options, the reinforcement is terminated with U-shaped bars, and here is a somewhat hidden option. If opposite edges of the wall outline are terminated by these U-bars and you specify the U-bars arm length in a way that the arms overlap, these U-bars are made into stirrups. In the picture below, this arrangement is made for pairs of sections 4 - 6 and 3 - 14 and 7 - 12.



Pict. Specifying the termination of the reinforcement for individual edges of the wall outline

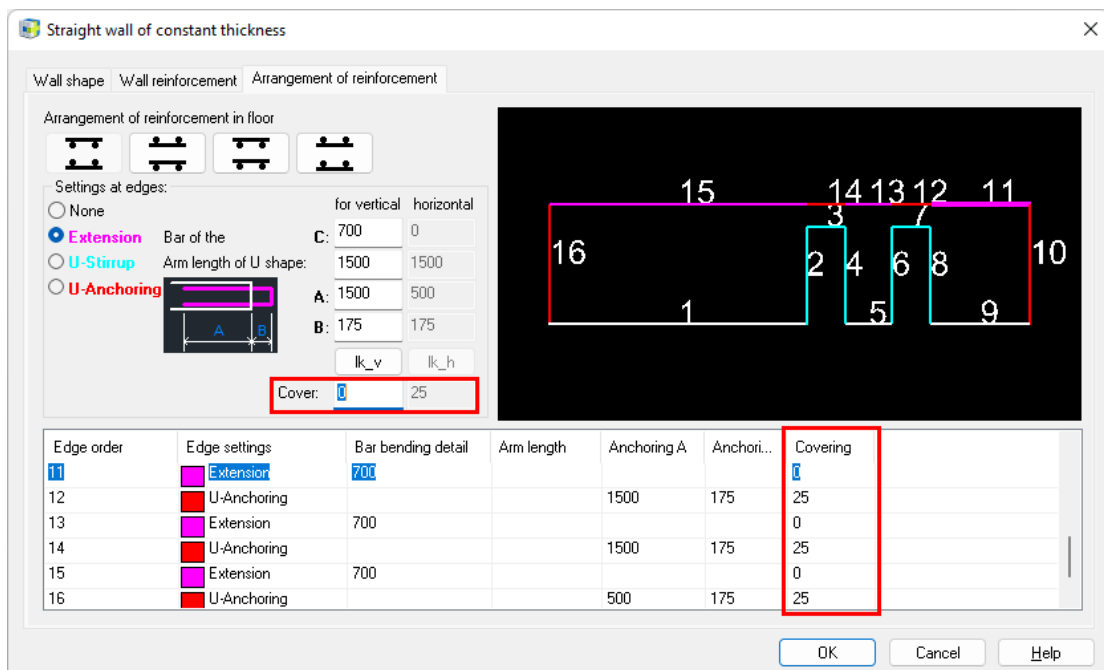
The above-mentioned stirrup was always defined with a diameter of 8 mm in previous versions. The new version now offers a choice between choosing the same diameter for all stirrups or creating the stirrup diameter according to the diameters of the U-bars that the stirrup replaces.



Pict. A new option for specifying stirrup diameter created by connecting opposite U-arms

▪ New parameter for covering in the wall plane

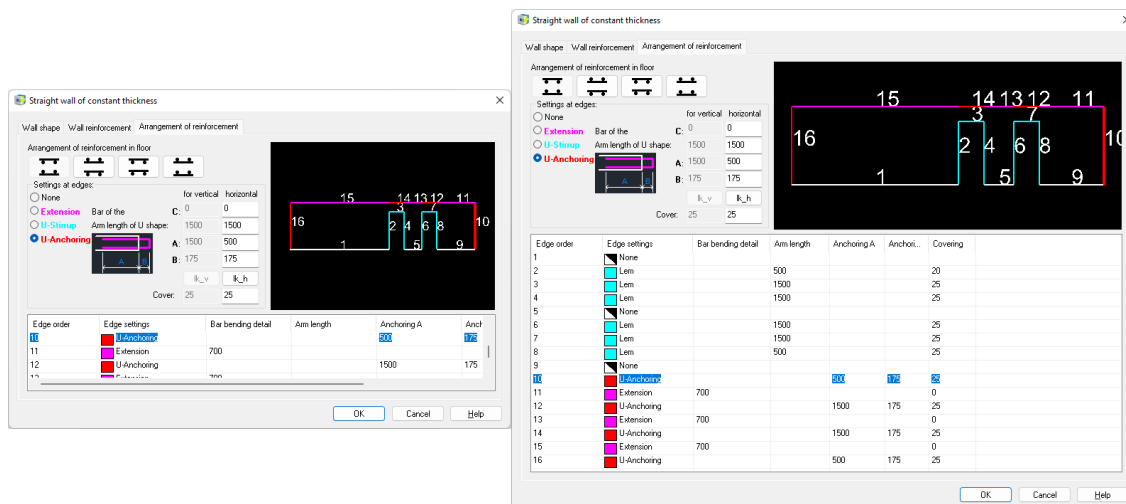
In the previous CADKON version, the reinforcement cover from the bottom edge of the wall was governed by the values that were determined for the cover perpendicular to the wall plane. In the new version, it is possible to enter cover separately for each segment. This is useful because in practice the cover of the vertical reinforcement from the bottom of the wall is always 0 and also the cover of the horizontal reinforcement is often given 0.



Pict. New options to determine the reinforcement cover at individual edges of the wall outline

▪ Customizable dialog size

In the new CADKON version, it is possible to increase/decrease the size of the dialog by dragging the edge of the window, which is especially useful in the "Arrangement of Reinforcement" dialog tab, because here you can see a preview of the wall shape. Changing the size of the window also changes the size of the wall preview, which makes it easier to select individual wall edges to define the way the reinforcement termination.



Pict. New position of the wall outline preview and customizable window size makes it easier to enter reinforcement parameters

▪ Correct display on monitors with 4K resolution

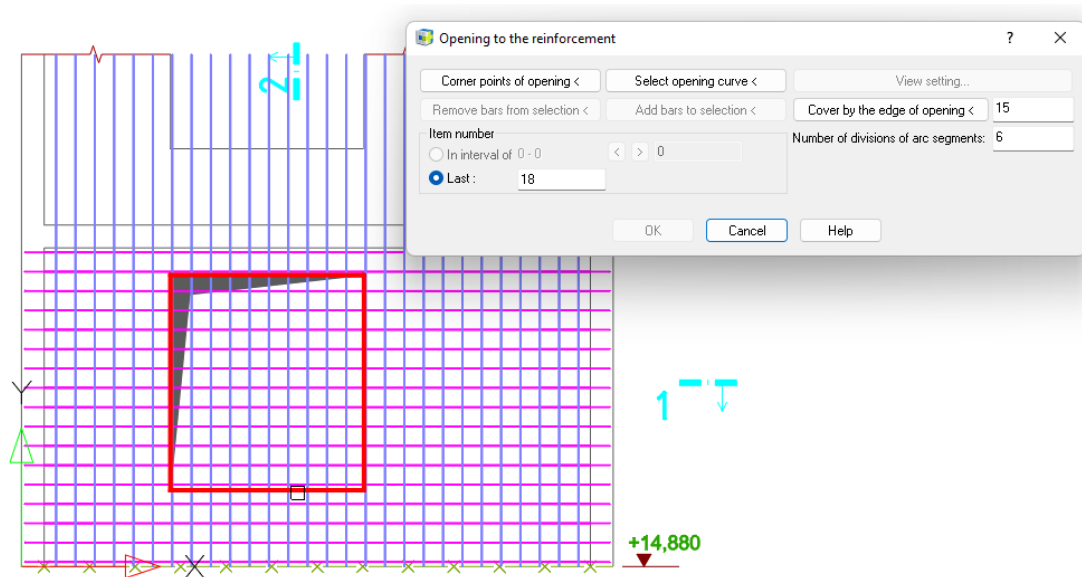
Several other improvements were made in the wall function, such as correct display of the dialog on monitors with 4K resolution, taking into account the default setting of the dimensioning method of bars (to the axis/to the edge), etc.

Opening to the reinforcement function enhancement

CADKON+ RC offers a tool for cutting out the reinforcement at the opening position. Based on feedback from users using this tool, we have improved it in several ways for version 2023 Service Pack 1:

▪ Option to select 2D section outline object

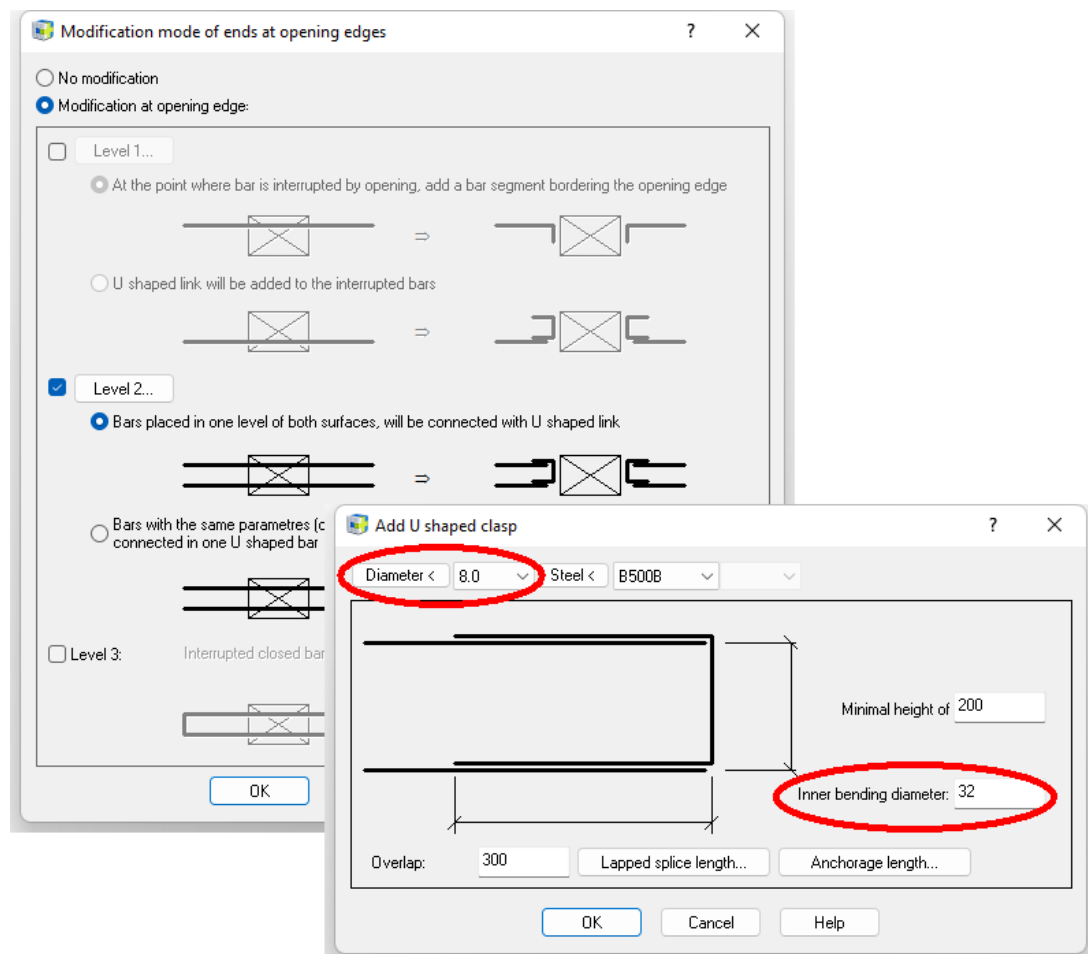
The shape of the opening to be cut into the reinforcement can be specified either by corner points of the opening or by selecting a closed curve. It is now possible to select a curve that is part of the section outline - so there is no need to draw it again. Clicking on a curve will highlight its shape in red, thus providing a good check that the opening shape has been entered correctly.



Pict. Example of opening outline highlighted in red

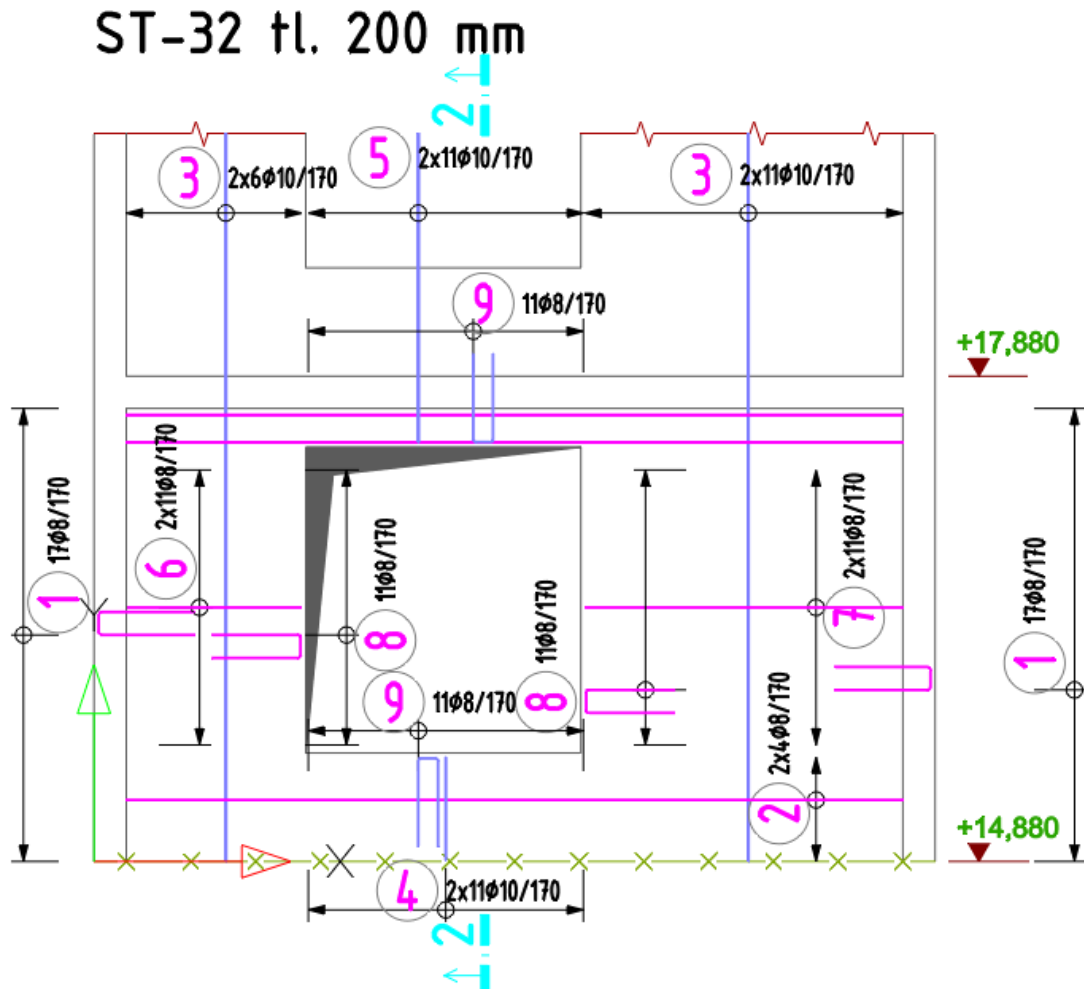
▪ **Bar rounding diameter and measurement method according to default option**

The „Opening into the reinforcement“ function allows you to choose the way the bars are terminated. The edge of the opening can be lined with U-shaped bars. The preset rounding diameter of these clasps now corresponds to the parameters set in the **Bar Preset**. This also applies to the dimensioning method of the bar sections (external dimension/per axis).



▪ Edging U bars forming a row

The U-shaped bars that line the edges of the opening are now joined into a row of bars. The advantage is that it is possible to quickly describe them using the function "Description of a row of bars".



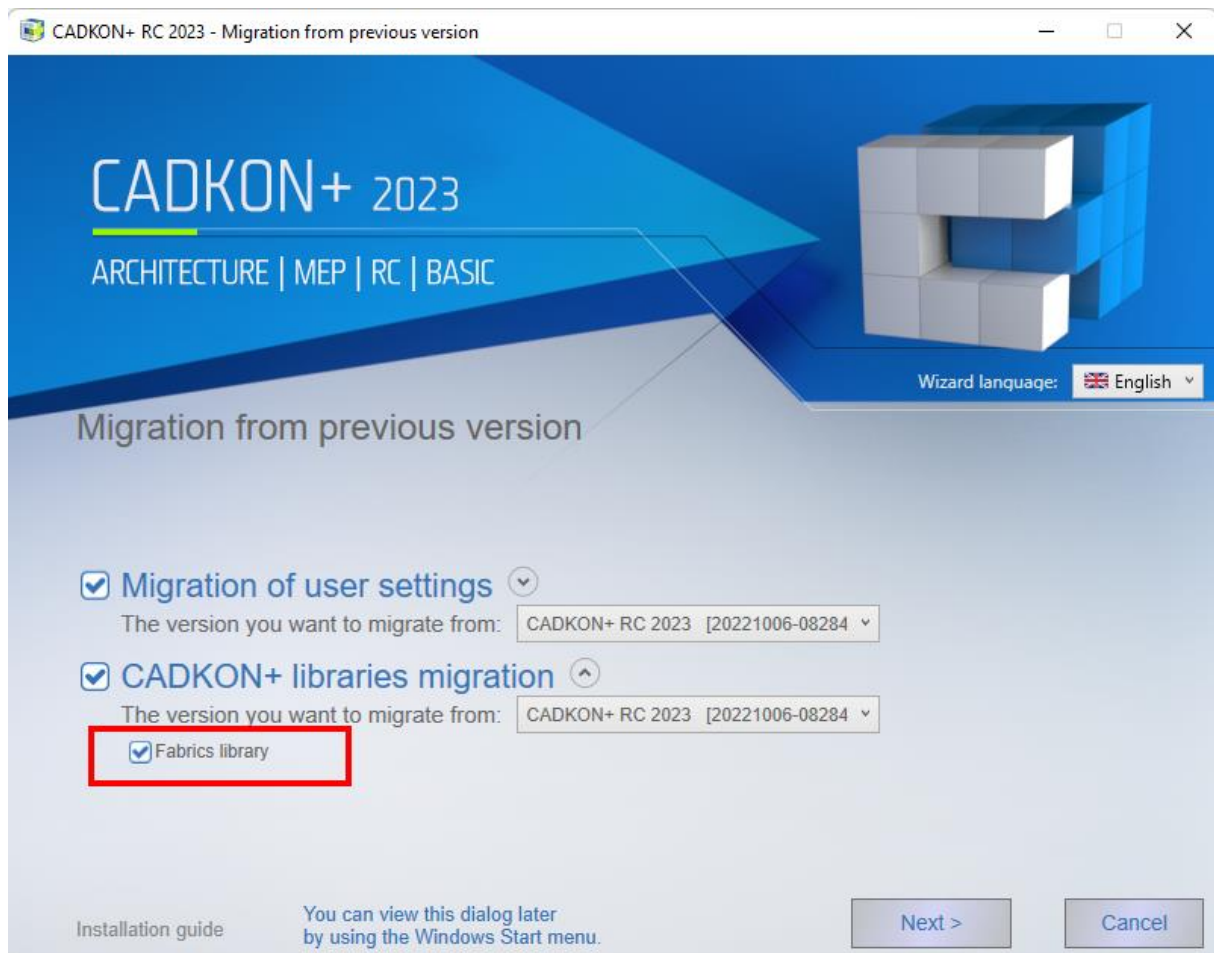
Pict. Wall after cutting an opening and performing the description of the rows

Improvements to the dialog for inserting/editing mesh

Dialog with the properties of the inserted/edited mesh has been expanded with the possibility to measure the dimensions of the mesh from the drawing.

Migration from previous version

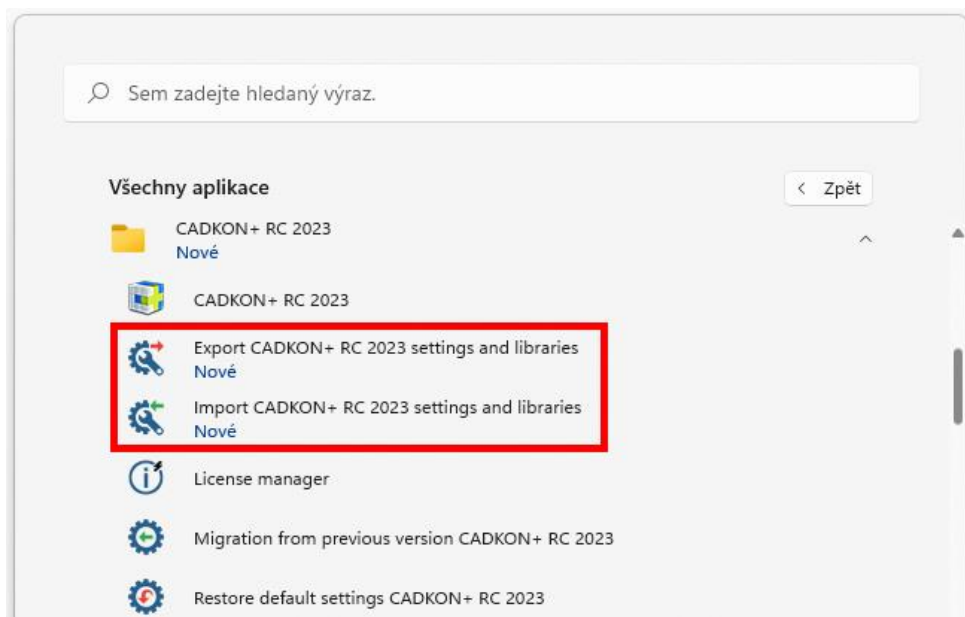
The settings migration tool from the previous version has been extended with the ability to migrate the mesh library. The mesh library - the AbRcFabrics.sqlite file - is by default located in the C:\ProgramData\AB Studio\CadkonPlusRc_2023\en\Dat folder. Migration consists of adding user changes in the migrated library to the new library. Records that have the value "User" in the "Author" column are transferred.



Pict. Option to migrate the mesh library has been added to the settings migration tool from the previous version

Settings and libraries Export/Import

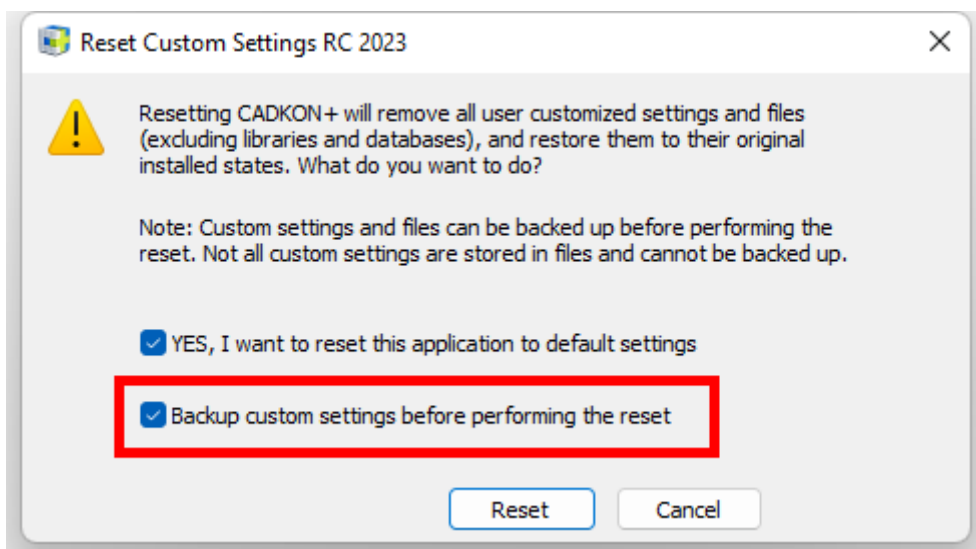
The tool for exporting/importing settings and libraries is designated for easy backup and transfer of settings to another computer. In this version, it was expanded to include layers settings, masks for the reinforcement description settings, mesh library, etc. These are files from the folders %appdata%\AB Studio\CadkonPlusRc_2023\en\Bin and %appdata%\AB Studio\CadkonPlusRc_2023\en\Dat.



Pict. In the CADKON+ RC 2023 folder you will find tools for pro Export / Import of settings, for Migrating settings and for Restoring settings

Restoring default settings

Restore default settings tool is used to reset all user changes and to create a state that is the same as state straight after installation.

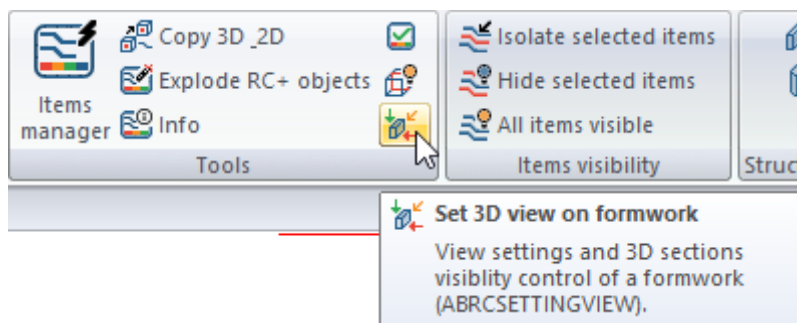


Pict. The Restore application was improved with Backup custom settings

The „Backup custom settings before performing the reset” option creates a backup identical – apart from the libraries – to the export of the Export settings tool mentioned above.

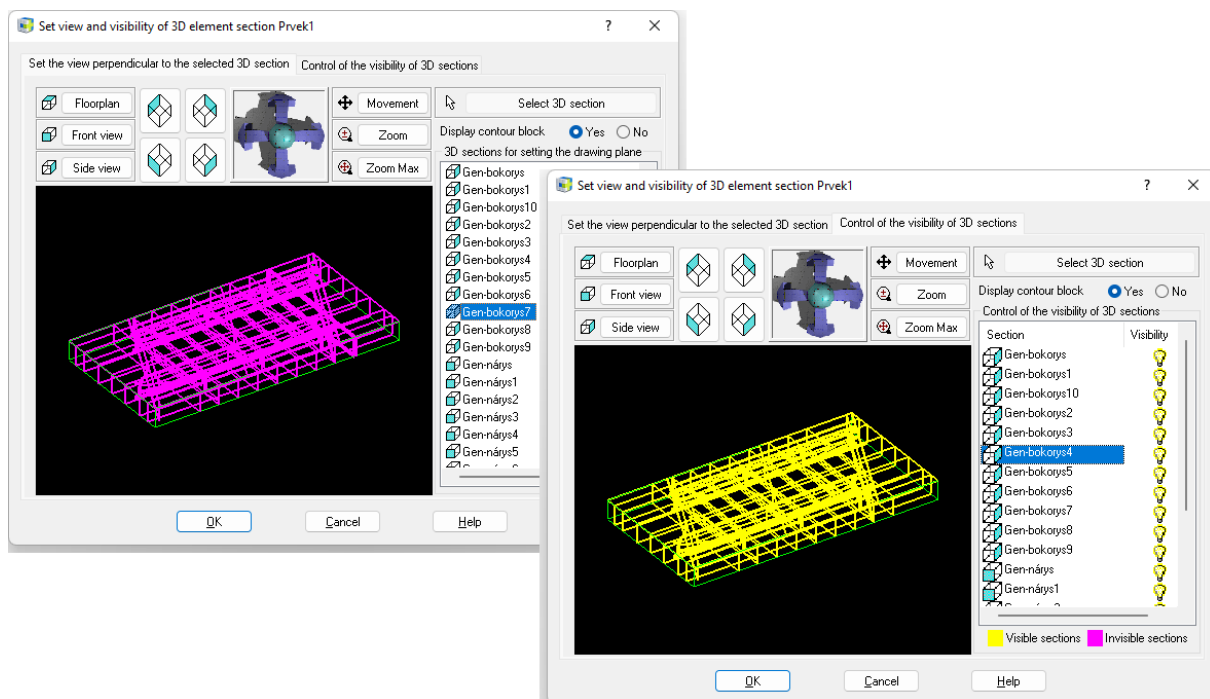
View settings and controlling the visibility of 3D sections

This function is primarily intended for working on a 3D model and serves both to set a 3D view of the reinforced element and to control the visibility of 3D sections.



Pict. Set 3D view on formwork is located in the Tools ribbon

As in the Building Elements Control program, the dialog panel snapshot displays a view of the current building element. In contrast to the display of the element in Control of building elements, in this program the building element is displayed by defined 3D sections of the formwork. It has two basic functions, which are contained in two tabs of the dialog panel:



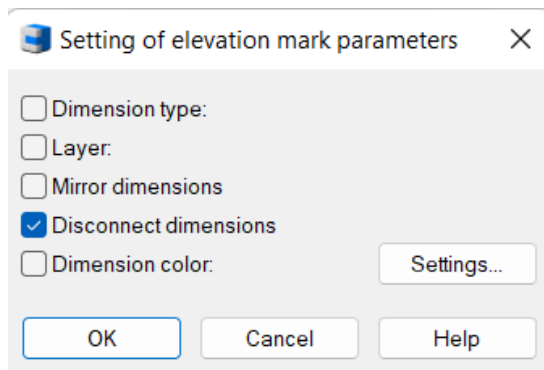
Pict. Dialog has two tabs: Set the view perpendicular to the selected 3D section and Control of the visibility of the 3D sections

If you make 3D section invisible, all bars inserted into this 3D section or its display in a 2D section will also be automatically made invisible.

Disconnect elevation marks

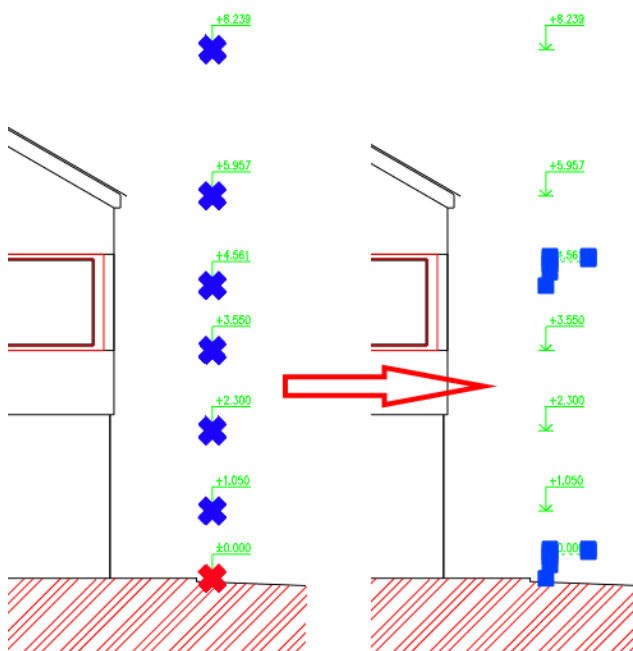
Based on requests, we have extended the functionality of the elevation marks to include the ability to disconnect elevation marks. By default, the elevation marks react to changes in position relative to the base. However, in some cases, this behavior was not suitable for users and they requested the ability to disconnect the dimensions so that when moving, for example moving a whole section, the dimensions are not updated.

- Rendered elevation marks can be disconnected so that they are no longer updated, e.g. when moving, copying, etc.



Pict. The disconnection is done using the Elevation mark edit dialog

- Disconnected elevation marks do not display any glyph after being selected in the drawing (neither the base red cross nor the blue cross of the base-bound dimensions are displayed).



Pict. Example of disconnected elevation marks and their display after being selected in the drawing

- Disconnected elevation marks can be reconnected at any time to reactivate them.

Optimising the working speed with elevation marks

Based on your feedback, we have significantly improved the speed of working with elevation marks. In large drawings where there were a large number of dimensions - usually more than 100, there was a delay in displaying glyphs (blue and red crosses) showing the base and the associated dimensions when marking dimensions and some operations with elevation marks.

- Speeding up the marking of elevation marks with glyphs when marking them in the drawing.
- Quicker elevation mark marking when running the Edit base/Change base of existing dimensions.
- Quicker elevation mark marking when running the Edit base/Change base of existing dimensions/ Select dimensions for changing the base.

To illustrate, table below show speed comparison of CADKON+ 2023 and CADKON+ 2023.1 (Service Pack 1) on real drawings from users:

	CADKON+ 2023: Drawing 1 (244 height dimensions)	CADKON+ 2023.1: Drawing 1 (244 height dimensions)	CADKON+ 2023 Drawing 2 (186 height dimensions)	CADKON+ 2023.1 Drawing 2 (186 height dimensions)
Designation of height dimensions using glyphs when selecting in the drawing	11 seconds	Immediately	6 seconds	Immediately
Marking of height dimensions when starting the function Editing bases/ Changing the base of existing dimensions	12 seconds	Immediately	11 seconds	Immediately
Marking of height dimensions when starting the Edit bases function/ Change the base of an existing dimension/ Select a new base	24 seconds	7 seconds	13 seconds	5 seconds

Pict. Comparison of elevation marks speed in CADKON+ 2023 and 2023.1

Solved problems common for CADKON+ ARCHITECTURE, CADKON+ RC and CADKON+ BASIC

Settings migration

- Incorrect migration of specific content of user libraries of bubbles.

Layer Manager

- NeNon-functional options to remove override of viewport layers.
- Wrong layer ordering if the name contains a hyphen.

General tables

- Random program failure when editing data link to an Excel file.
- If an invalid value is entered for the row height, the focus of the cursor jumps to another field and the incorrectly entered value cannot be changed.
- Cannot turn off cell background color if background color is set in table style.
- Cannot change path type and data link path to XLS.

Hatching

- Cannot use the Properties dialog to change the hatch pattern for multiple selected hatches at once.
- The program does not detect a point of a simple specific boundary.
- Program failure if hatches do not detect any boundary.
- Program failure if blocks of height dimensions are in the detected boundary.
- Derive properties do not take transparency, layer, background color.
- Hatches do not detect note boundaries if Create Separate Hatching is set.

Dimensioning

- Random program failure when comparing different dimension styles.
- The delimiter sign and text offset size changes when editing elevation mark base.
- Change extension line length function incorrectly recalculates the entered extension line length in a drawing in metres.
- It is not possible to select another layer key than CKDIM in the dimension parameter setting.
- Longitudinal dimensions from professional dimensions (ARCH) are drawn to the current level after repeating the Enter key.

Blocks and attributes

- Overriden block attributes are not saved, only the first attribute change is saved.
- User values defined within DWGPROPS are lost when a copy is created using CTRL+C and CTRL+V (e.g. when copying to a layout).
- Program failure when attempting to create a block from specific entities in the drawing space.
- When editing a nested block using REFEDIT, the block disappears after editing and saving changes.

User interface

- Program failure when attempting to edit ribbon content.

Notes

- Incorrect formatting of the second line when bullets or numbering is used.
- Mtext formatting is not saved after editing.
- The text preview during mirroring is not controlled by the MIRRTEXT variable.
- The Mtext editor is not visible if WYSIWYG is turned off and the text is edited at an angle other than zero.
- Unable to select Mtext/Dtext content using Quick Select.
- Unable to select dimension text override content using Quick Select.

Multileaders

- Broken leader extension option in command line.
- Cannot change Multilink text background via Properties (CTRL+1).
- Unable to change the offset factor of the text background mask.

Layouts

- Layout tab is wrongly moved with Drag n Drop (tab is moved 1 position next).

Print

- Specific background images are not published if the images are shot at an angle other than zero.
- PDF is generated incorrectly if export of fonts as geometry is disabled in publishing.

3D

- 3D solid box is created with an incorrect Y-axis dimension.
- 3D solid box cannot be created when specifying certain dimensions.
- Program failure when trying to copy, move etc. object in a specific drawing.

Other

- The program fails when specifying the name of a named view with a space.
- Layer states doesn't work well with RGB colors. RGB are converted to color index after saving the layer state.
- Slow saving of a DWG drawing if the view palette is displayed and the default is to save to old DWG formats.
- Program crashes when copying a specific drawing using CTRL+C and CTRL+V.
- Values starting with a decimal point (e.g. .5) cannot be entered for inputs.
- Non-functional values -1 and -2 of the CETRANSOPARENCY variable for transparency presets.
- Unable to open drawing with specific objects.

Solved problems for CADKON+ ARCHITECTURE

Lintels

- Program failure when attempting to load a lintel shorter than the width of an opening.

Wall

- Non-functional option Next for selecting a different layer key for rendering the wall.

Descriptions and room tables

- When editing a room or in the room description manage, zero area of some rooms is loaded in a drawing with very high coordinates.
- Tables by flats or zones are not reported if the name contains special characters (`_T("<>/\\\";?*|,=")`).
- When the character `/n` is used in the room name, which separates the text into two lines, the `/n` is also written in the room name in the room table.

Multi-layer constructions

- When attaching hatch multi-layer constructions, node points are created at the point of contact.
- When setting the drawing order from the last layer, the specified or opposite boundary is drawn, even if it is set not to be drawn.
- When connecting a structure, the offset value is incorrectly calculated as a projection onto the specified structure rather than a offset from the specified point to the structure.
- If two connected segments are connected at a very small angle to each other, the layers outside the multi-layer structure are incorrectly rendered.

Profile itemizing

- All pipes and bars inserted from the steel profile library have zero weight during profile itemizing.
- Leader arrow parameters, multileader arrow color and size always override the style settings.
- The item manager highlights only one item in the drawing in the totals view, even if there are multiple items.
- Some icons in the Item Description Definition dialog will turn blue when you hover over them with cursor and remain that color.

Elevation marks

- Change scale function does not change the size of the elevation mark leader.
- Incorrect display of the base glyph size (highlighting) and the associated elevation marks when opening a drawing in millimeters followed by opening the drawing in metres.

Openings

- When deleting an opening with a cased doorframe, cased doorframe with an offset or cased doorframe with carpenter's jamb, the wall will be incorrectly closed.

- For openings with cased doorframe, the preview (glyph) of the opening location is incorrectly displayed.
- In case of a conflict with a library when editing an opening including a bubble, the selection does not return to the drawing in specific cases.
- Door descriptions are created with a space in the text at the beginning or end of the text.

Isolation

- Isolation function draws the opposite boundary into a polyline instead of a line segment.

Tables

- When a table template (*. ttab) is deleted manually, the template menu is not updated and the deleted template is still displayed for selection.

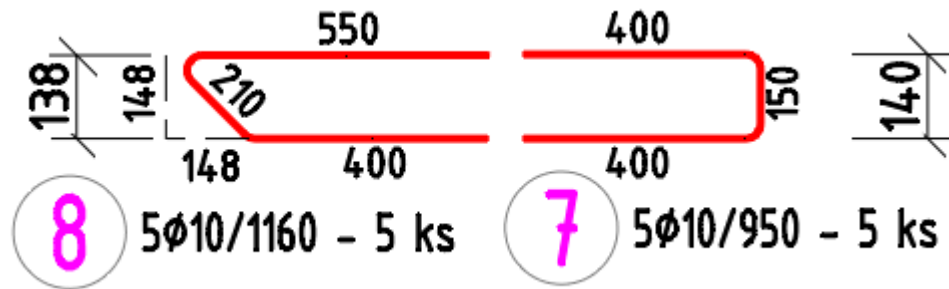
Bubbles

- When selecting a leader instead of a bubble when editing a bubble, the section Extension line in the Bubble dialog, Parametres tab is incorrectly loaded.

Solved problems for CADKON+ RC

Bars

- When dynamic input is enabled, values cannot be entered into the non-modal dialog for entering a 2d cut.
- Incorrectly dimensioned U-shaped bar width with middle section not perpendicular to the U arms.



Pict. The original bar on the right, modified bar on the left – its dimensioning is now correct

- Editing the description content not work on the bar bending detail description.
- Bar row description: incorrect text position in the angle (0-30>. The angle range is changed from 120,5-300,5 to 93,5-273,5.
- Laying a row of bars between two bars: Problem with creating bar row in a shape of a fan
- Laying a row of bars alongside a polyline: When a straight bar is placed, the error message “error in the relative position of bar and polyline” is displayed.
- Bar adjustment does not work when the cutting range limitation is switched on.
- The Change bar spacing function allows the user to specify the number of bars in the row as 1.
- Bar description: When moving the bar description, the change of the description location becomes evident after using REGEN.

Meshes

- Mesh trimming: If the boundary runs partially along the mesh edge, the function incorrectly claims that the boundary does not cross the mesh.
- Mesh trimming: Some meshes are cut on the opposite side when trimmed using an arc
- Mesh bending detail: If only element not containing meshes, is reported as a result of a selection in dialog for selecting elements and layer, Unexpected exception is displayed.
- Mesh mirroring: Mirroring mesh trimmed along an arc: The shape of a mesh with a boundary containing an arc is distorted after mirroring.
- Editing mesh dimension using a node – exceeding the maximum length of the mesh type dimension.

Profile itemizing

- All pipes and bars inserted from the steel profile library have zero weight during profile itemizing.
- Leader arrow parameters, multileader arrow color and size always override the style settings.

- The item manager highlights only one item in the drawing in the totals view, even if there are multiple items.
- Some icons in the Item Description Definition dialog will turn blue when you hover over them with cursor and remain that color.

Elevation marks

- Change scale function does not change the size of the elevation mark leader.
- Incorrect display of the base glyph size (highlighting) and the associated elevation marks when opening a drawing in millimeters followed by opening the drawing in metres.

Other

- The Info command: The bar length is now displayed only to the nearest millimeter.
- Isolate selected items: The option to select the bars first and then run the command does not work.
- 2D+3D Copy: Problem with information about the number of elements: If an element with 2D section displaying information about number of elements is copied using the "2D+3D Copy, this information at the 2D section of the newly copied element is displayed at the original element.
- Control of building elements in a drawing with element names missing.
- Item Explorer: The option to delete and shake off the un-inserted items by selecting an item marked in red from the list and then press the Delete button does not work.

Technical support

In case of technical issues with CADKON+ installation or functionality, please contact us via our Helpdesk.

Signing in: <http://helpdesk.cadkon.eu/>

Registration <http://helpdesk.cadkon.eu/Registration/Index>

Request a forgotten password: <http://helpdesk.cadkon.eu/Account/ForgotPassword>

CADKON and CADKON logo are registered trademarks belonging to GRAITEC s.r.o.

All other brands, product names and trademarks belong to their respective owners.

© Copyright 2022 GRAITEC s.r.o.

Created by GRAITEC s.r.o. 17.10.2022